

# Software Overview

## AccessBase 2000 Basics for Windows 7

**Linear**<sup>®</sup>  
*Building On Innovation.*

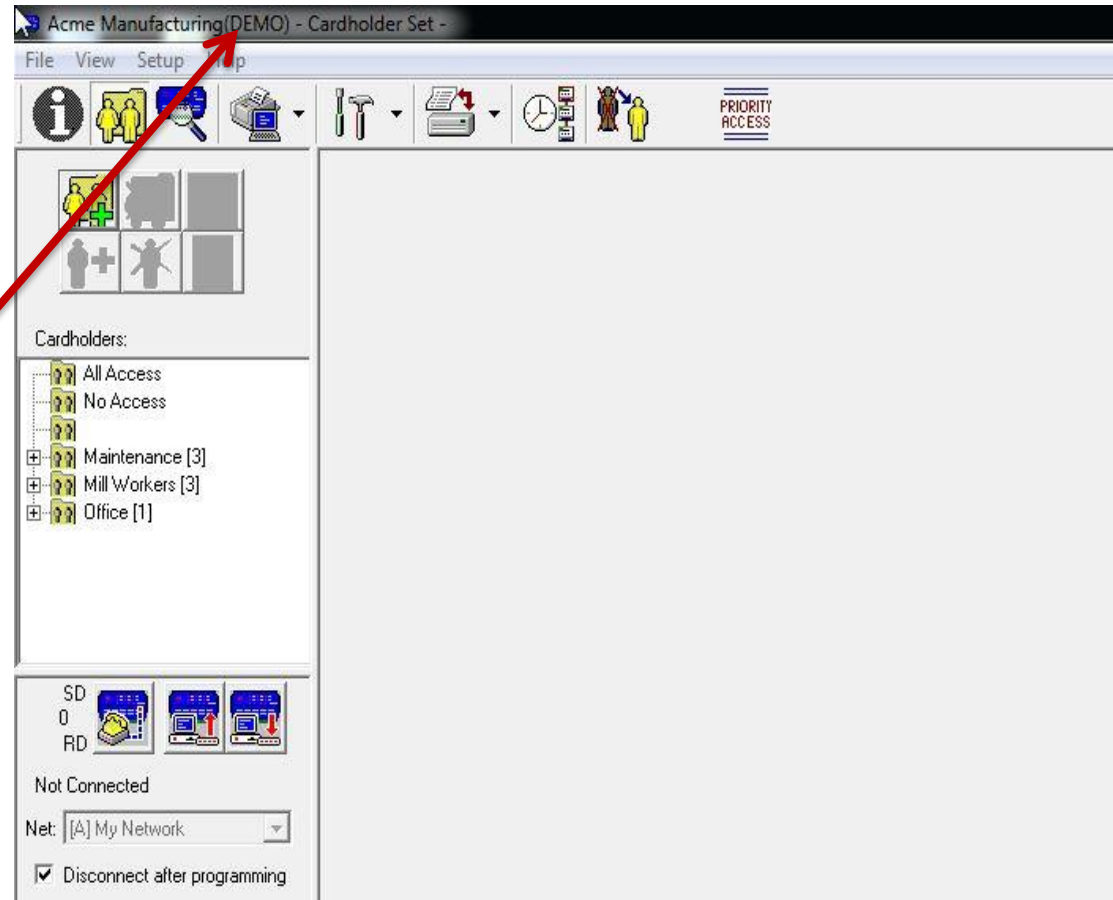
A **NORTEK** Company

Access & Integration | Health & Wellness | Security & Control

Access Controls | CCTV-Video Security | Central Vacuums | Commercial Door Operators | Intercoms  
Garage Door Operators | Gate Operators | Personal Emergency | Radio Controls | Security Systems

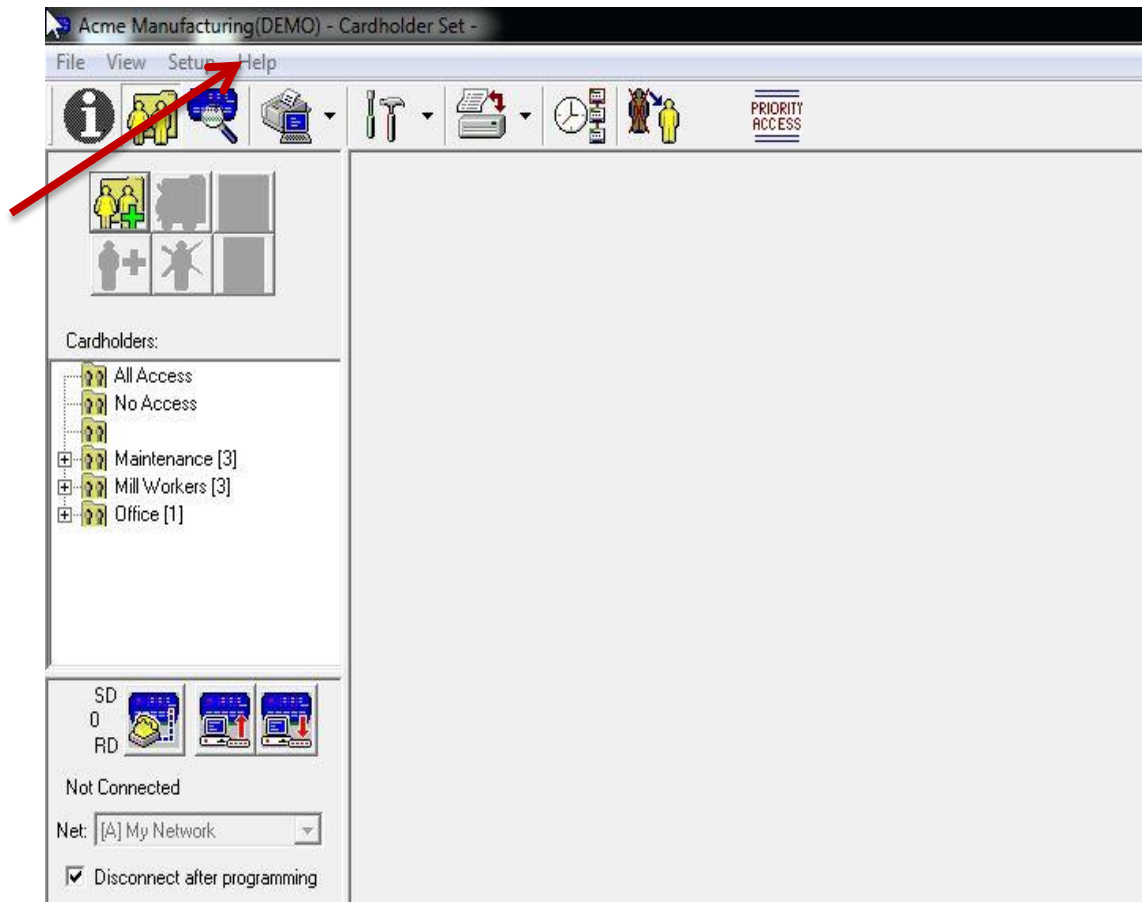
# AccessBase 2000 Basics

- Upon opening AccessBase 2000, you will be directed to the “Acme Manufacturing” database. This is a Demo provided as a means to get familiar with the software. It is not recommended for use as an actual database.
- For this module, this database will be used.
- If a new database needs to be created, please see Module 2 “AccessBase 2000 Startup.”



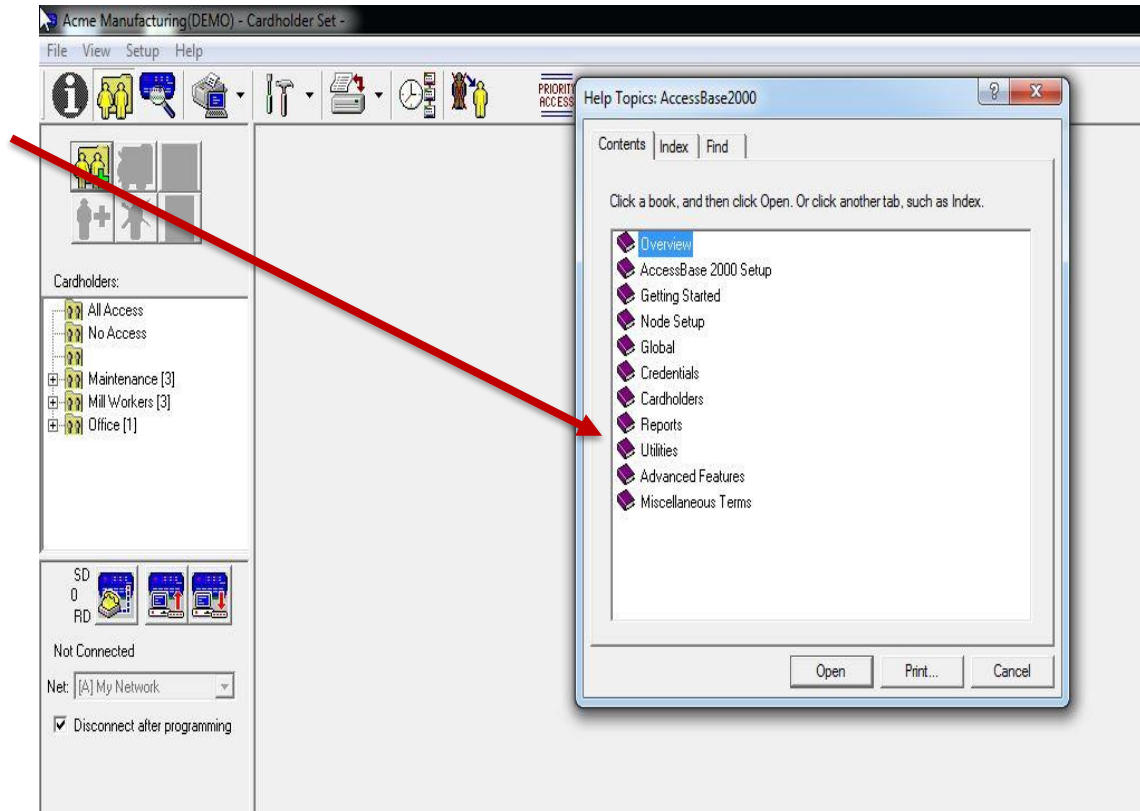
# AccessBase 2000 Basics

- It is important to know that AccessBase 2000 software *does* have a manual on how to program. The manual is in the software. To go to the manual, simply left click on the “Help” button.



# AccessBase 2000 Basics

- These areas will answer any of your AccessBase 2000 questions.



# AccessBase 2000 Basics

- As a point of reference, AccessBase 2000 always opens in this Cardholder screen. Addition of Cardholders is covered in the Module 3 Webinar: Adding Cardholders and Credentials.
- For this Module, there are five basic areas that need to be addressed:

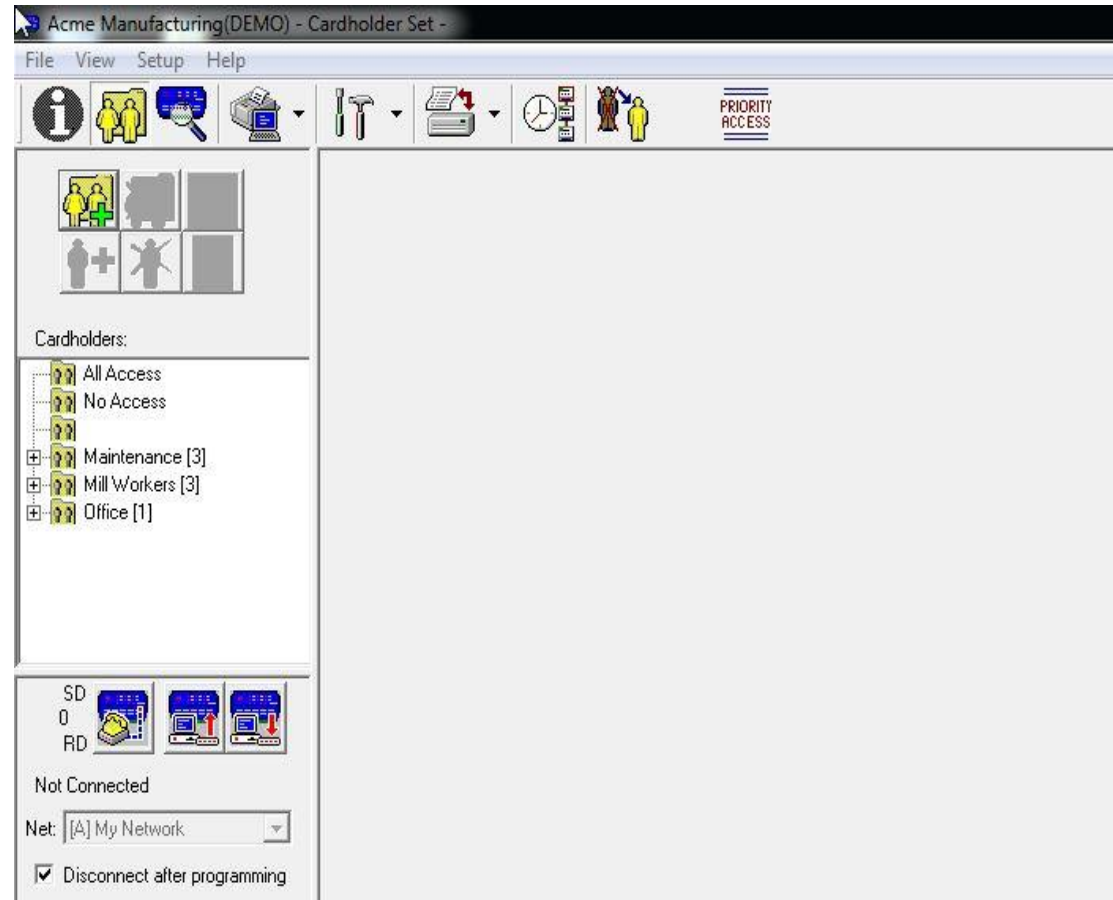
Cardholder Screen

On/Off Line with Installation button

Upload button

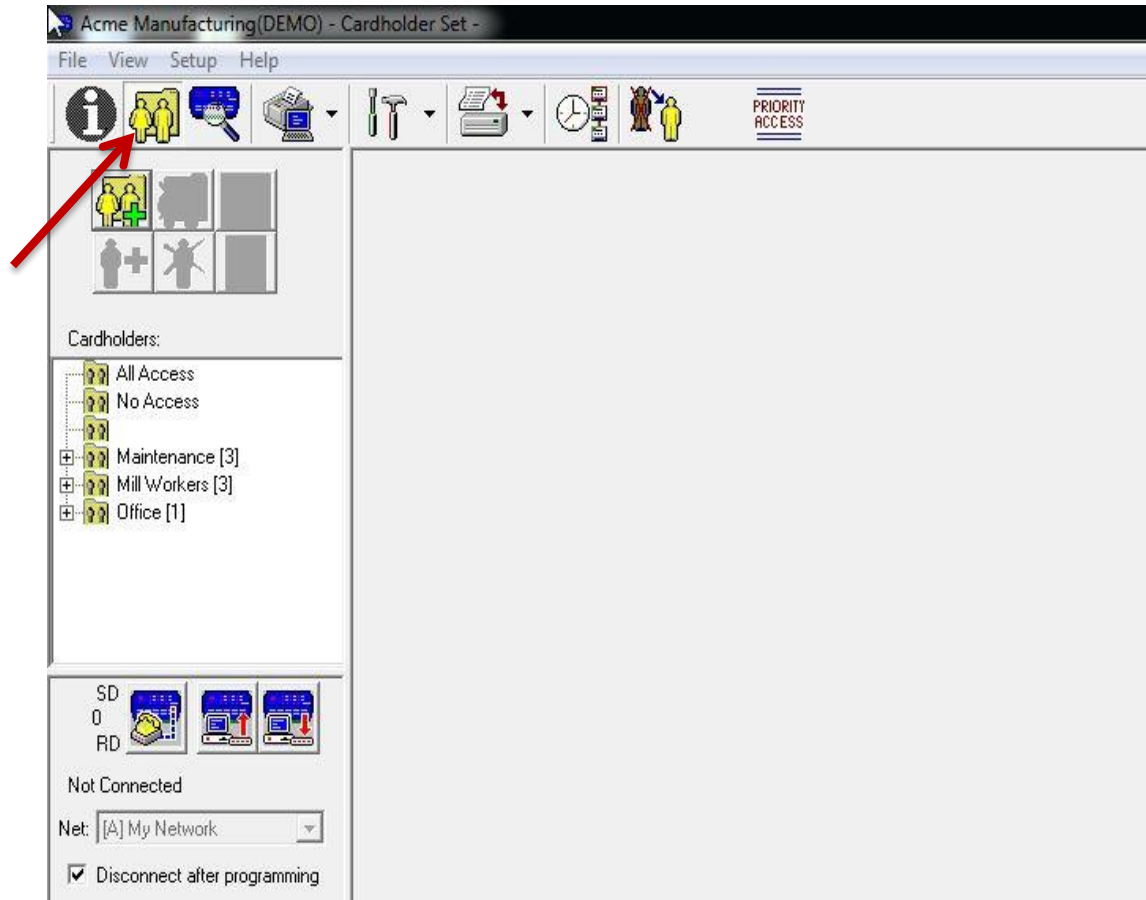
Tool Bar

Network Screen



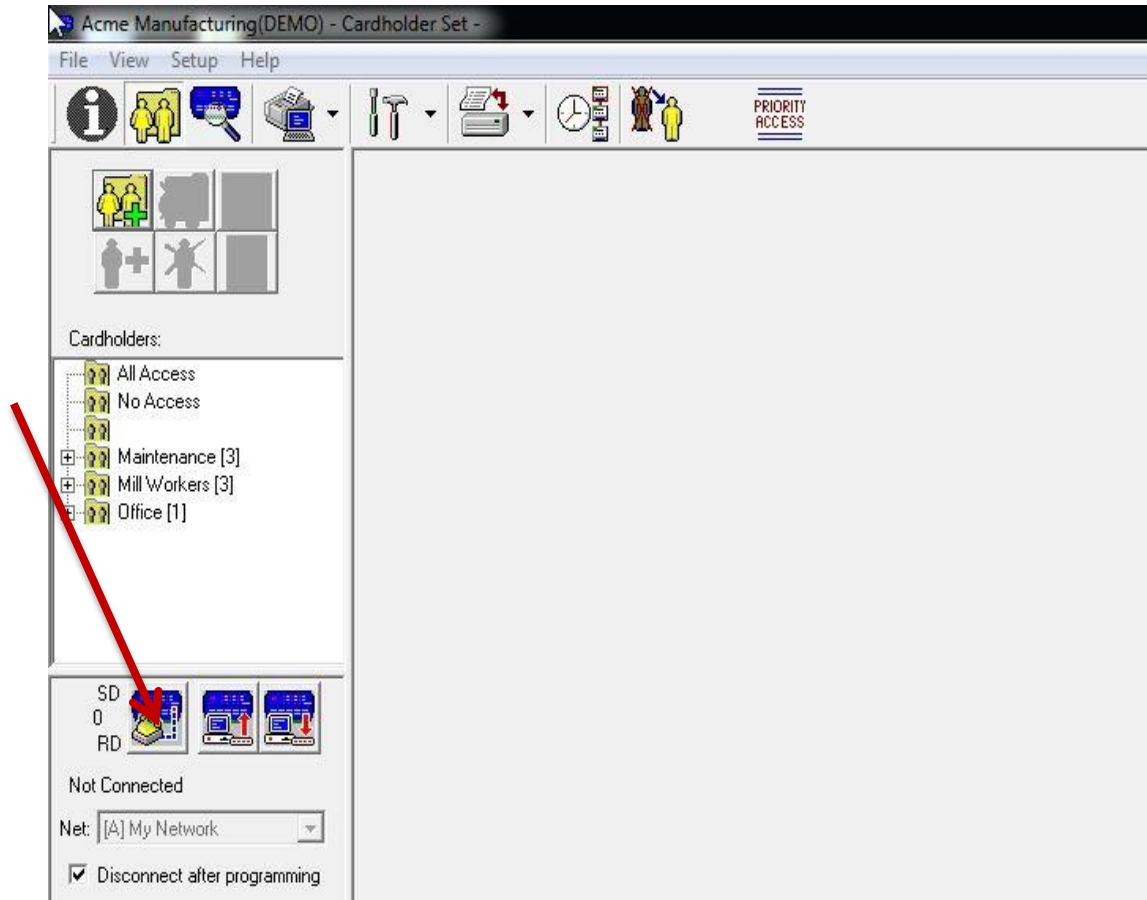
# AccessBase 2000 Basics

- The Cardholder screen is where personnel can be added along with appropriate Credentials (Cards, Transmitters, Directory Codes, Entry Codes).
- This screen can always be accessed by “Left Clicking” with your mouse on the two yellow figures.



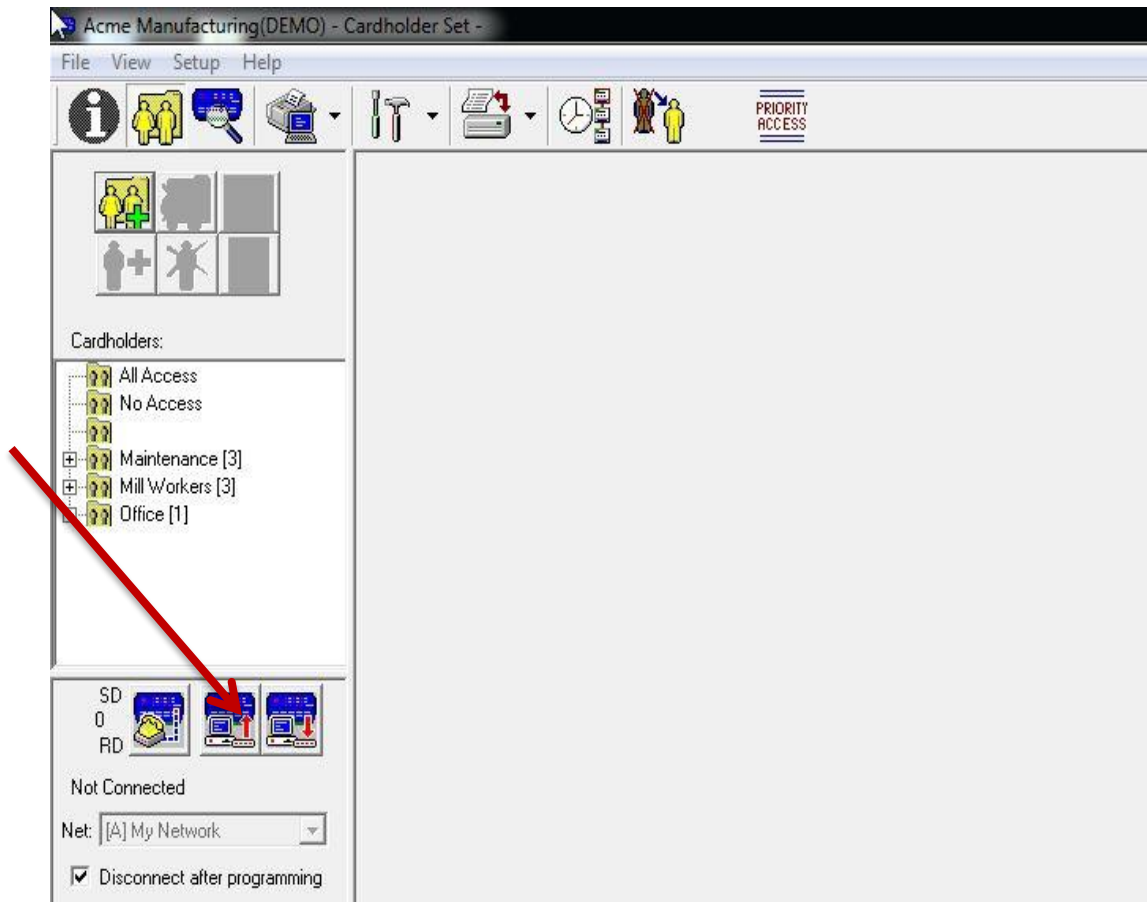
# AccessBase 2000 Basics

- The On/Off Line with Installation button is located in the lower left hand corner of the screen and is symbolized by a Yellow Telephone Icon. A single “Left Click” will allow you to make a connection with the Telephone Entry/Access Control Panel.
- That connection can be over a Telephone Line or with a Direct Connection



# AccessBase 2000 Basics

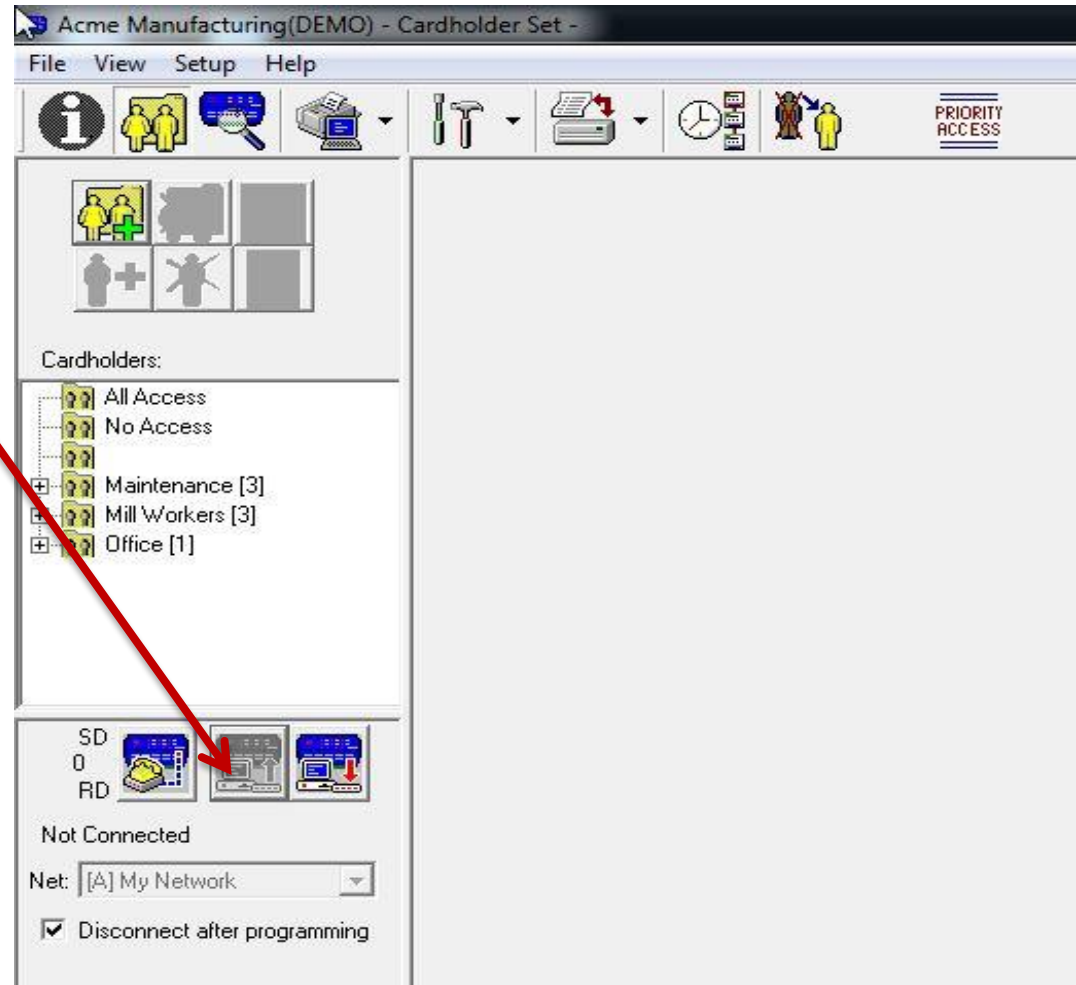
- The “Upload” button is symbolized as a red arrow pointing upwards.
- In this database, a quick look reveals that the upload button is illuminated. An illuminated upload button indicates that a change has been made in the database, but has not been sent to the panel.





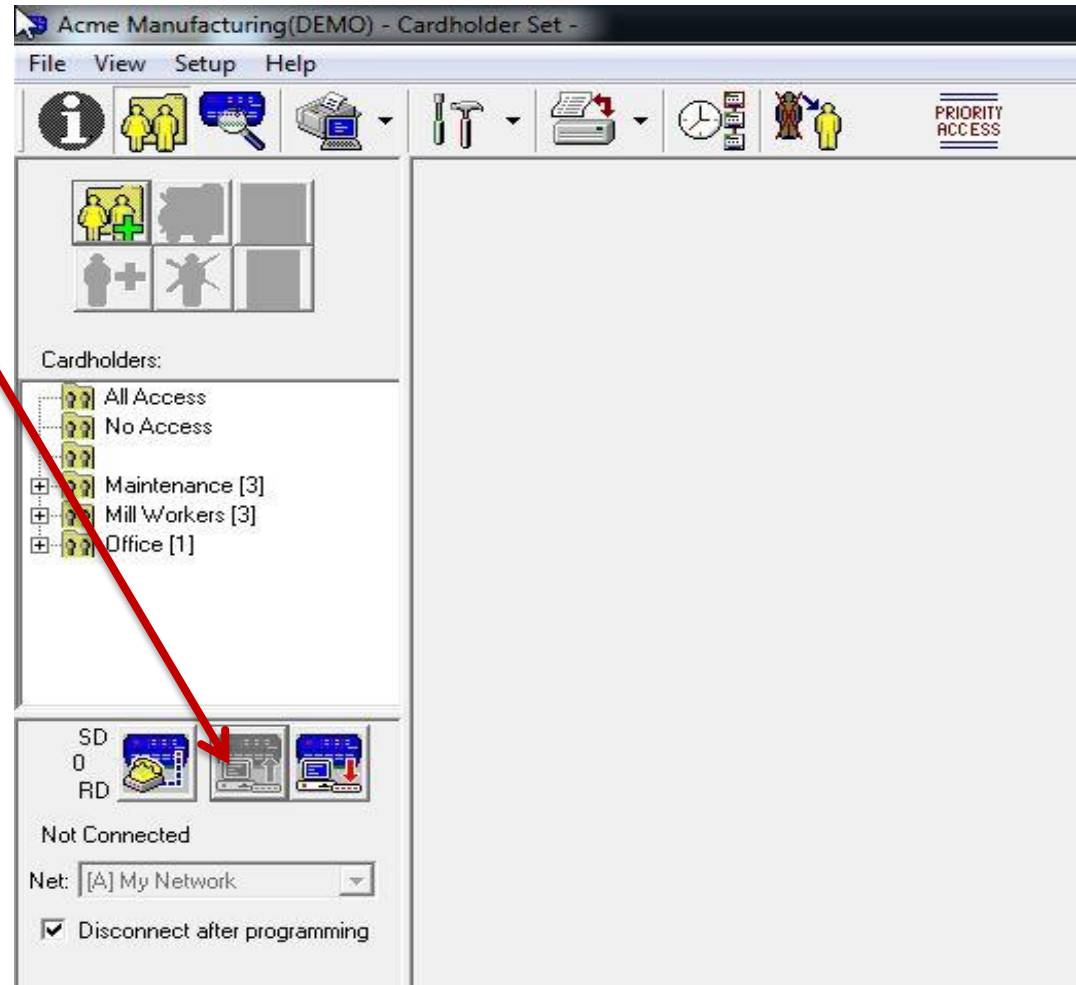
# AccessBase 2000 Basics

- Once the upload button has been activated, the upload button grays out and the packets of information are loaded into a queue. If connected with the panel, the packets will be uploaded and the numerical value of the number of packets will decrease until it reaches zero.



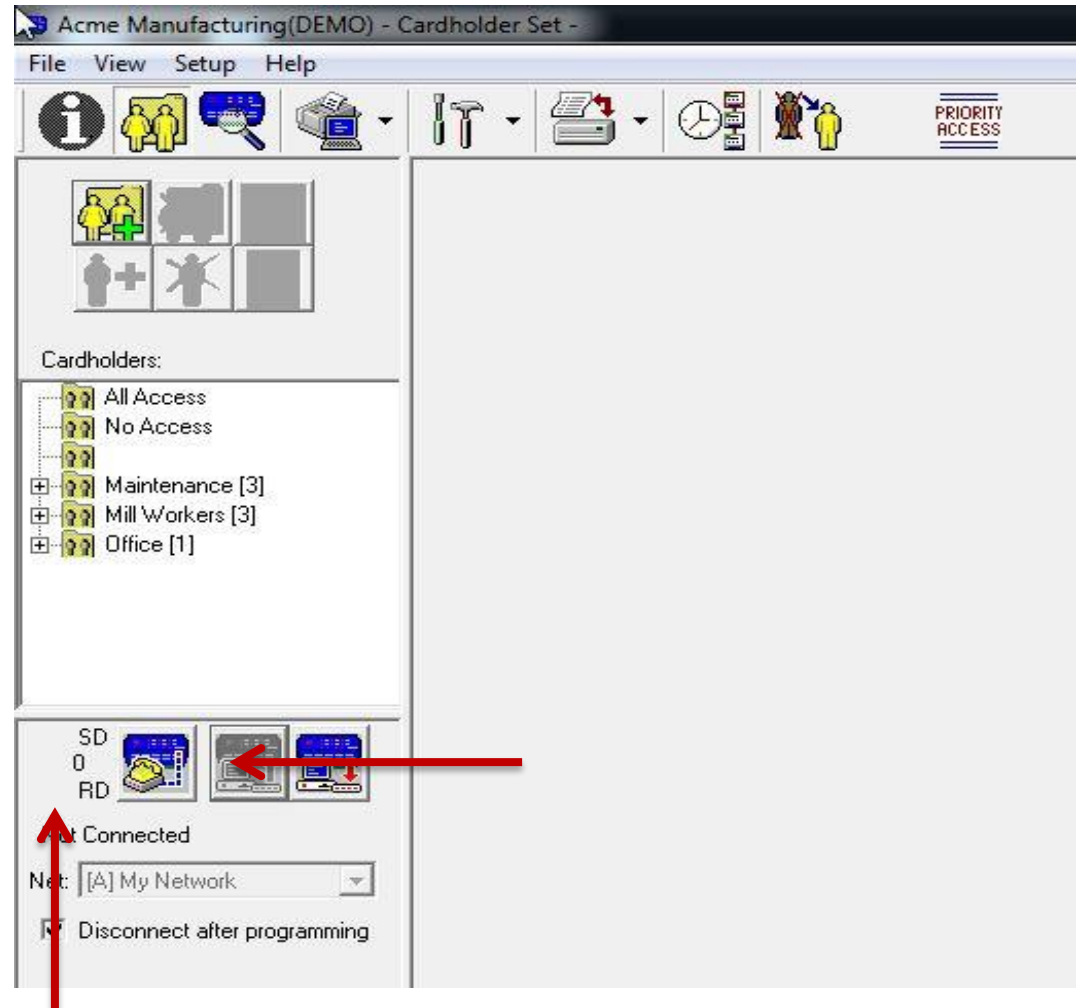
# AccessBase 2000 Basics

- If the “Disconnect after programming” box is checked, the software will automatically disconnect after programming is complete.



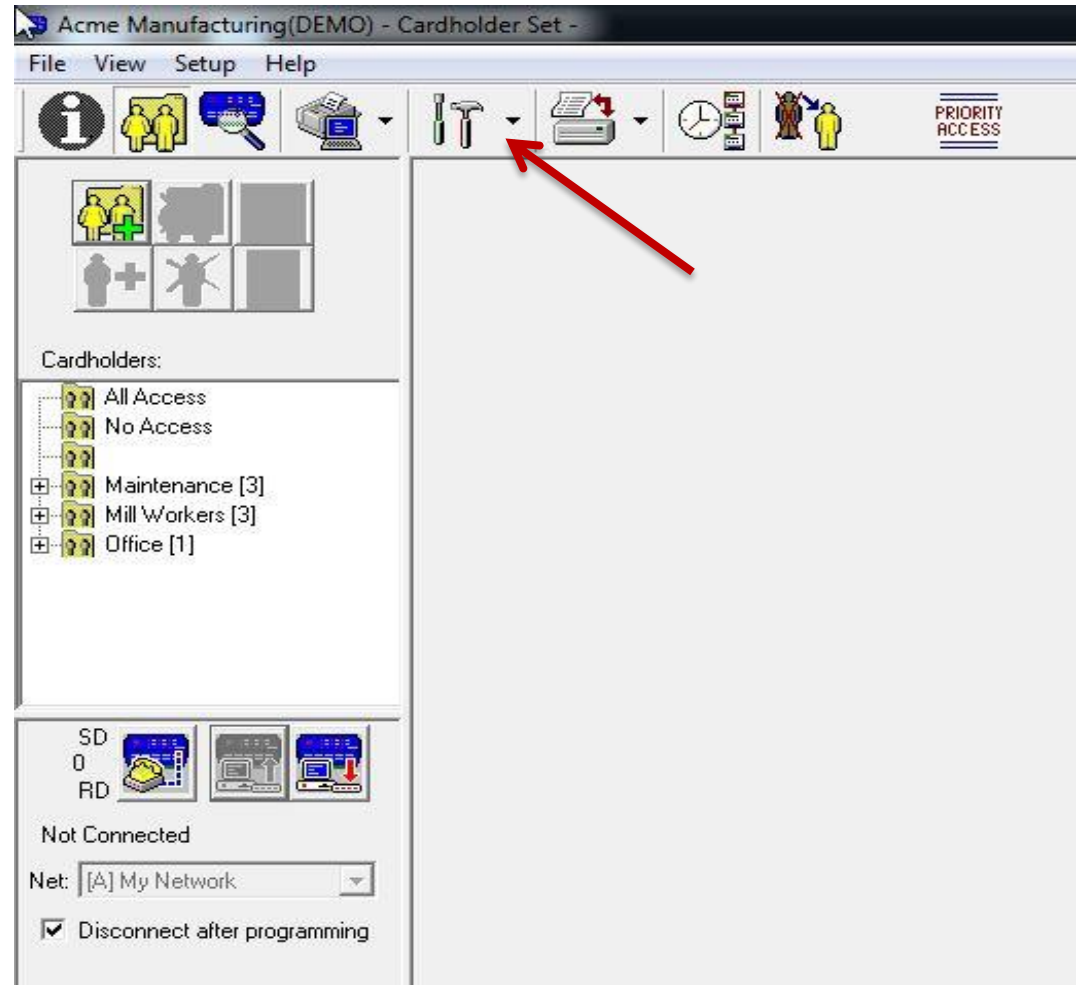
# AccessBase 2000 Basics

- Please note that there is zero number of packets of information to be sent to the panel, and the upload box is grayed out. This is the normal condition after programming is complete.



# AccessBase 2000 Basics

- The Tool Bar is the Icon that can help navigate through different areas of the software.



# AccessBase 2000 Basics

- By “Left Clicking” on the Tool Bar icon. The areas we can access are:

Global Network Settings

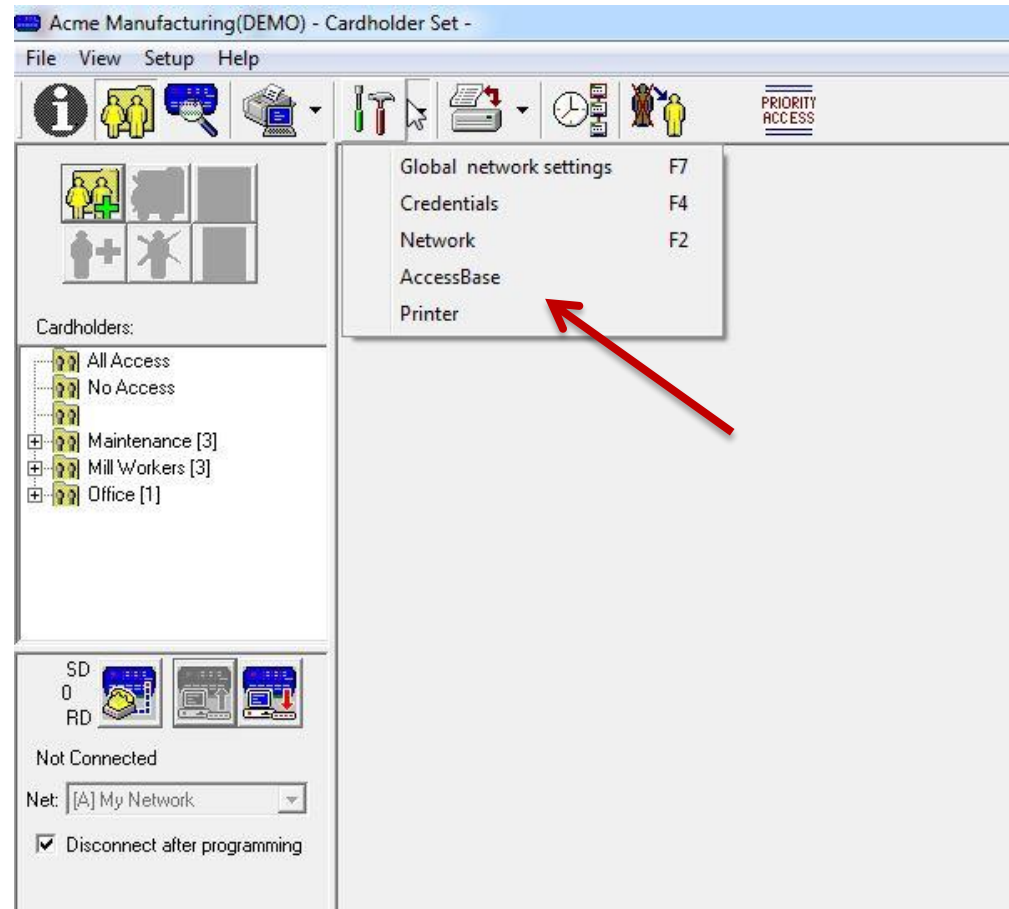
Credentials

Network

AccessBase

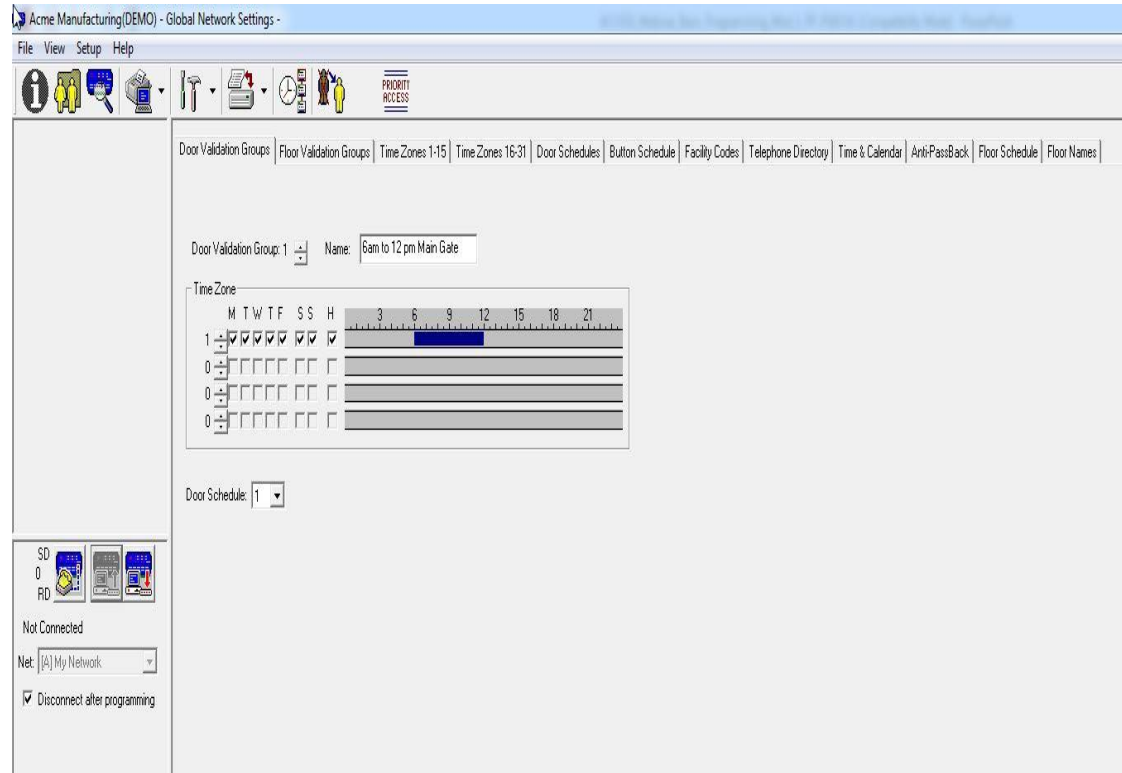
Printer

- We will briefly go over each of these fields.



# AccessBase 2000 Basics

- In the “Global Network Settings” screen are settings that will effect the entire installation. “Door Validation Groups” (Access Levels), “Floor Validation Groups” (Elevator Control), “Time Zones,” and “Door Schedules” are all accessed in this screen and are covered in Webinar Module Four – Validation Groups.



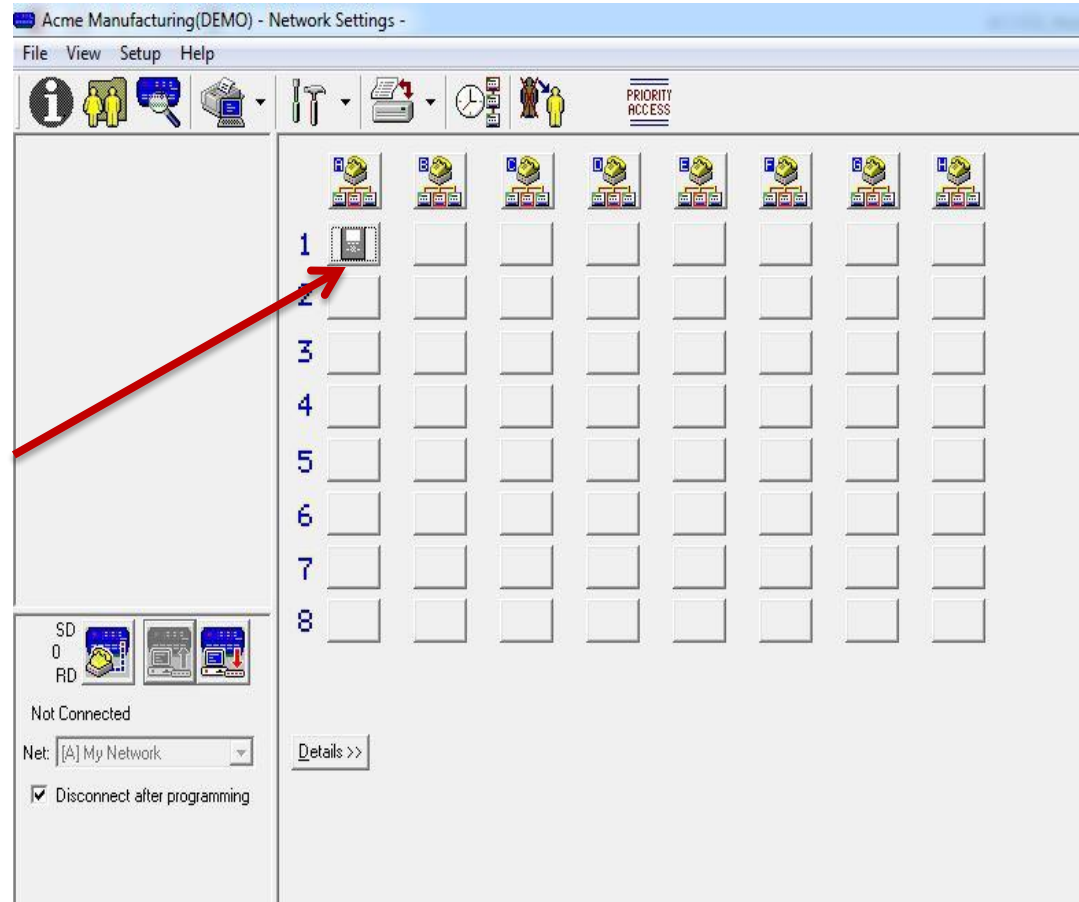
# AccessBase 2000 Basics

- In the Credentials area, Transmitters and Cards both Individually and as Blocks can be added. **Note: These Transmitters and Cards will not be active until added to a Cardholder.**
- This is covered in depth in Module 3 “Adding Cardholders & Credentials.”
- Entry Codes and Directory Codes can be viewed in this field, but not added.



# AccessBase 2000 Basics

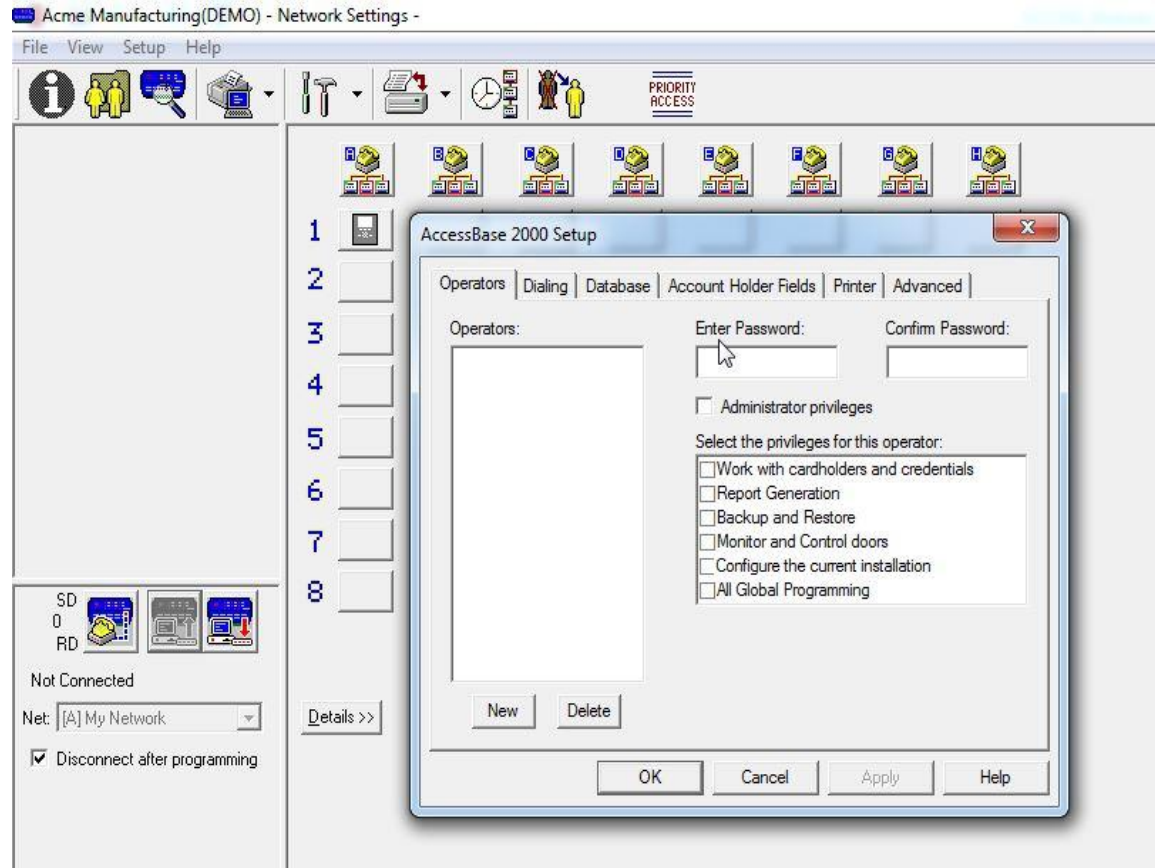
- The “Network” screen is where the “Nodes” or panels can be viewed and configured. Node configuration is covered in depth in Module 2
- We can see that this installation has one Node (an AE1000Plus) in network “A.” There can be 8 Nodes networked together (via RS485 communication), and 8 networks to an installation for a total of 64 Nodes. They can be the AM3 Plus, AE1000Plus, or the AE-2000Plus.





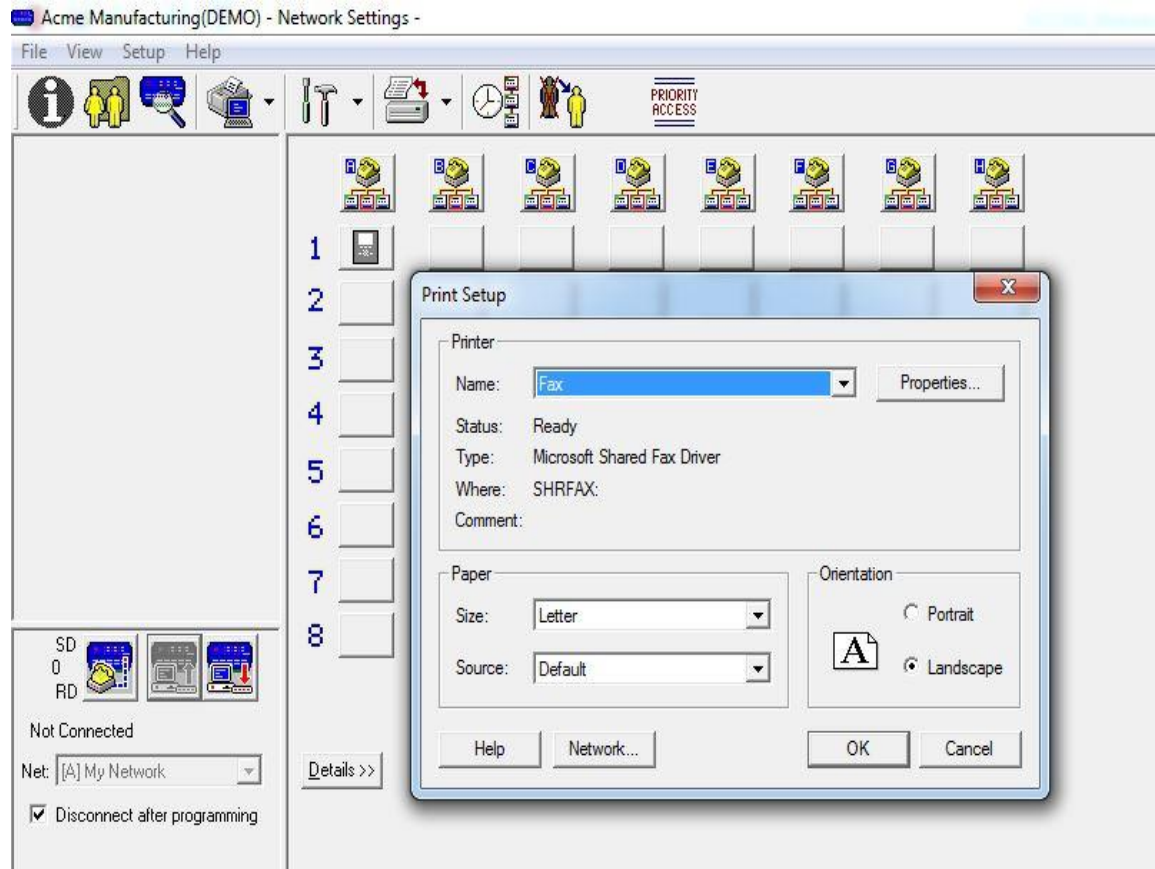
# AccessBase 2000 Basics

- In the “AccessBase” field, you can create “Operators” which will restrict which screens can be viewed. You can also select different modems to dial with, as well as create “Account Holder Fields” in order to add additional information to Cardholder fields.



# AccessBase 2000 Basics

- The “Printer” option gives you the capability to select different printers.



# AccessBase 2000 Basics

---

## This completes AccessBase 2000 for Windows 7: Module 1

For other Related Product Presentations, Videos and other training opportunities visit us at [www.LearnLinear.com](http://www.LearnLinear.com).

For more information on sales of Linear, please visit us at [www.linearcorp.com](http://www.linearcorp.com) .

*or call*

800-421-1587

To locate a Dealer in your area to purchase a Linear product,  
please visit <http://www.linearcorp.com/locator/>