

# Welcome to



## Intermediate Programming:

# Module 2: Creating a Door Auto-Unlock using Time Spec Groups

Presented by  
Paul Jones  
Technical Trainer



© 2008 Linear LLC. The information contained herein is subject to change without notice.

# Intermediate Programming

Module #2 – Creating a Door Auto-Unlock  
using Time Spec Groups

Pg. 1-14

## Module #2

Setting “Time Spec Groups”

&

Creating a Door Auto-Unlock

***To Set Time Spec Groups & Create Door Auto Unlock.....***

# Setting “Time Spec Groups” & Creating a Door Auto-Unlock

Time Spec Groups are a setting where different “Time Specs” are grouped together and can added to an “Access Level” in order to simplify programming by not having to create different Access Levels.

Sample: The Front Lobby Door will Auto Unlock during the specified times as defined within the “Time Spec Group” created.

***To Set Time Spec Groups & Create Door Auto Unlock.....***



Wed 6/10/2009 1:13:51 PM

Start page Print Hide TOC Help Logout

Main : Administration : People : Change Related [ Access Level Report | Access Validity Report | Roster Report ]

### Personal Information

Last Name\*  First Name  MI

Activation Date/Time\*   :  Expiration Date/Time   :

Notes  ID#

Select "Time Spec Groups"

Access Control | Photo ID | User-defined | Contact | Other Contact | Vehicles | Login | Recent Activity

Access Cards: John has:  **< add new >**  
1) 20075

Hot stamp #:

Encoded #:

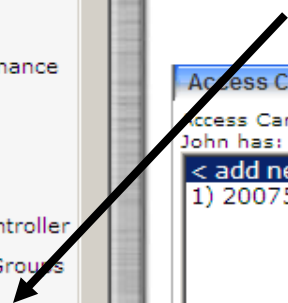
Card Format:

Disabled:

Access Levels: Available:  Selected:

Apply Revoke Card Read Card

- ADD
- Change/delete
- Reports
- Schedule Action
- Set Threat Level
- Utility
- Setup
- Access Control
- Alarms
- Cameras
- Floorplans
- Network Resources
- Site Settings
- System Maintenance
- Threat Levels
- Time
  - Holidays
  - Network Controller
  - Time Spec Groups
  - Time Specs
- Support/Utility





Wed 6/10/2009 1:18:25 PM

Start page Print Hide TOC Help Logout

Main : Setup : Time : Time Spec Groups

Related [ Access Levels | Readers | Time Specs ]

### Time Spec Groups

Name: \*

Description:

Time Specs:

Available:	Selected:
Always	
Employees	
Employees/Sat.	

> <

	Sun	Mon	Tues	Wed	Thurs	Fri
12 <sup>am</sup>						
1						
2						
3						
4						
5						
6						
7						
8						
9						
10						
11						
12 <sup>pm</sup>						
1						
2						
3						
4						
5						
6						
7						

We can see the three "Time Specs" that we had created previously.

We need to name our "Time Spec Group"



Wed 6/10/2009 1:50:18 PM

Start page Print Hide TOC Help Logout

- Inputs
- Event Groups
- Events
- Output Groups
- Outputs
- Temperature Inputs
- Virtual Inputs
- Cameras
- Floorplans
- Network Resources
- Site Settings
- System Maintenance
- Threat Levels
- Time
  - Holidays
  - Network Controller
  - Time Spec Groups**
  - Time Specs
- Support/Utility

### Time Spec Groups

Name: \*

Description:

Time Specs: Available:

Selected:



We have named our group and selected the Time Specs that we need

	Sun	Mon	Tues	Wed	Thurs	Fri
12 <sup>am</sup>						
1						
2						
3						
4						
5						
6						
7						
8						
9						
10						
11						
12 <sup>pm</sup>						
1						
2						
3						
4						
5						
6						
7						
8						



Wed 6/10/2009 1:52:50 PM

Start page Print Hide TOC Help Logout

Note the graph indicates which Time Specs have been chosen.

- Inputs
- Event Groups
- Events
- Output Groups
- Outputs
- Temperature Inputs
- Virtual Inputs
- Cameras
- Floorplans
- Network Resources
- Site Settings
- System Maintenance
- Threat Levels
- Time
  - Holidays
  - Network Controller
  - Time Spec Groups**
  - Time Specs
- Support/Utility

Selected:  
Employee  
Employee

	Sun	Mon	Tues	Wed	Thurs	Fri	Sat	H1	H2	H3
12 <sup>am</sup>										
1										
2										
3										
4										
5										
6										
7										
8										
9										
10										
11										
12 <sup>pm</sup>										
1										
2										
3										
4										
5										
6										
7										
8										

Click to see matching time specs.

powered by S2 SECURITY CORPORATION





Wed 6/10/2009 2:00:35 PM

Start page Print Hide TOC Help Logout

- Elevators
- Person Sections
- Portal Groups
- Portals
- Reader Groups
- Readers/Keypads
- Regions
- Utilities
- Alarms
  - Alarm Panels
  - Input Groups
  - Inputs
  - Event Groups
  - Events
  - Output Groups
  - Outputs
  - Temperature Inputs
  - Virtual Inputs
- Cameras
- Floorplans

Specs:

AVAILABLE: Always

SELECTED: Employees, Employees/Sat.

>

<

Matching Time Specs:

4					
5					
6					
7					
8					
9					
10					
11					
12pm					
1					
2					
3					
4					
5					
6					
7					
8					
9					
10					
11					

Matching whole hours Matching partial hours Affecte

Select "Portal Groups"

Save Cancel Delete



Wed 6/10/2009 2:09:03 PM

Start page Print Hide TOC Help Logout

- Elevators
- Person Sections
- Portal Groups**
- Portals
- Reader Groups
- Readers/Keypads
- Regions
- Utilities
- Alarms
  - Alarm Panels
  - Input Groups
  - Inputs
  - Event Groups
  - Events
  - Output Groups
  - Outputs
  - Temperature Inputs
  - Virtual Inputs
- Cameras
- Floorplans

### Portal Groups

Name: \*

Description:

Unlock Timespec:  when First in Unlock Rule  is satisfied

Threat Level Group:

Portals:

Available:	Selected:
Warehouse Door Reader	Front Lc

> <

We have named this Portal Group "Front Lobby Door Unlock"



Wed 6/10/2009 2:09:03 PM

Start page Print Hide TOC Help Logout

- Elevators
- Person Sections
- Portal Groups**
- Portals
- Reader Groups
- Readers/Keypads
- Regions
- Utilities
- Alarms
  - Alarm Panels
  - Input Groups
  - Inputs
  - Event Groups
  - Events
  - Output Groups
  - Outputs
  - Temperature Inputs
  - Virtual Inputs
- Cameras
- Floorplans

### Portal Groups

Name: \*

Description:

Unlock Timespec:  when First-in Unlock Rule  is satisfied

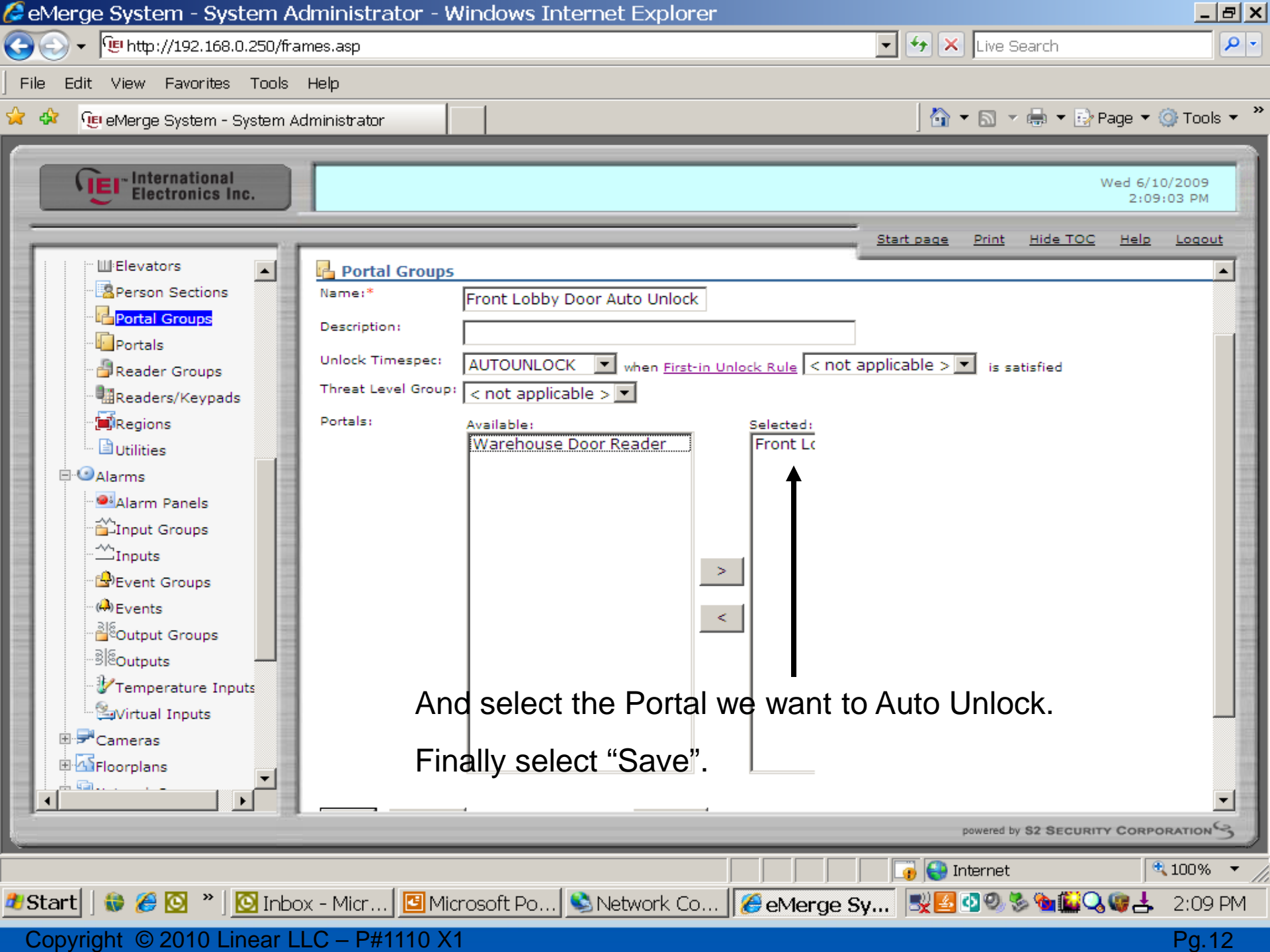
Threat Level Group:

Portals:

Available:	Selected:
Warehouse Door Reader	Front Lc

> <

Select the Time spec we just created in Time spec Groups



### Portal Groups

Name: \*

Description:

Unlock Timespec:  when First-in Unlock Rule 

Threat Level Group:

Portals:

Available:	Selected:
<input type="text" value="Warehouse Door Reader"/>	<input type="text" value="Front Lc"/>

> <

And select the Portal we want to Auto Unlock.  
Finally select "Save".

The Front Lobby Door will now Auto Unlock during the specified times as defined within the “Time Spec Group” created.



Browser Managed Security Platform

# This completes the eMerge section; Intermediate Programming Module 2 - Creating a Door Auto Unlock using a Time Spec Group

For other Related Product Webinars and Presentations (*eMerge Basic* , *eMerge Intermediate Mod #1-Creating Specific Access Levels*, *eMerge Intermediate Mod#3-Database Backup, Restoral ,Node Default and eMerge Intermediate Mod#4-First In Unlock Rule*) or, for a list of *all* pre-recorded webinars and other training opportunities visit us at [www.LearnLinear.com](http://www.LearnLinear.com).

For more information on sales of Linear Electronic Systems or products, please visit us at [http://www.linearcorp.com/iei\\_access\\_sales.php](http://www.linearcorp.com/iei_access_sales.php) or for information on all Linear products and services, please visit our home page at [www.linearcorp.com](http://www.linearcorp.com).

To locate a Dealer in your area to purchase a Linear product, please visit <http://www.linearcorp.com/dealers.php>

**Linear**<sup>®</sup>  
Building On Innovation.

© 2008 Linear LLC. The information contained herein is subject to change without notice.