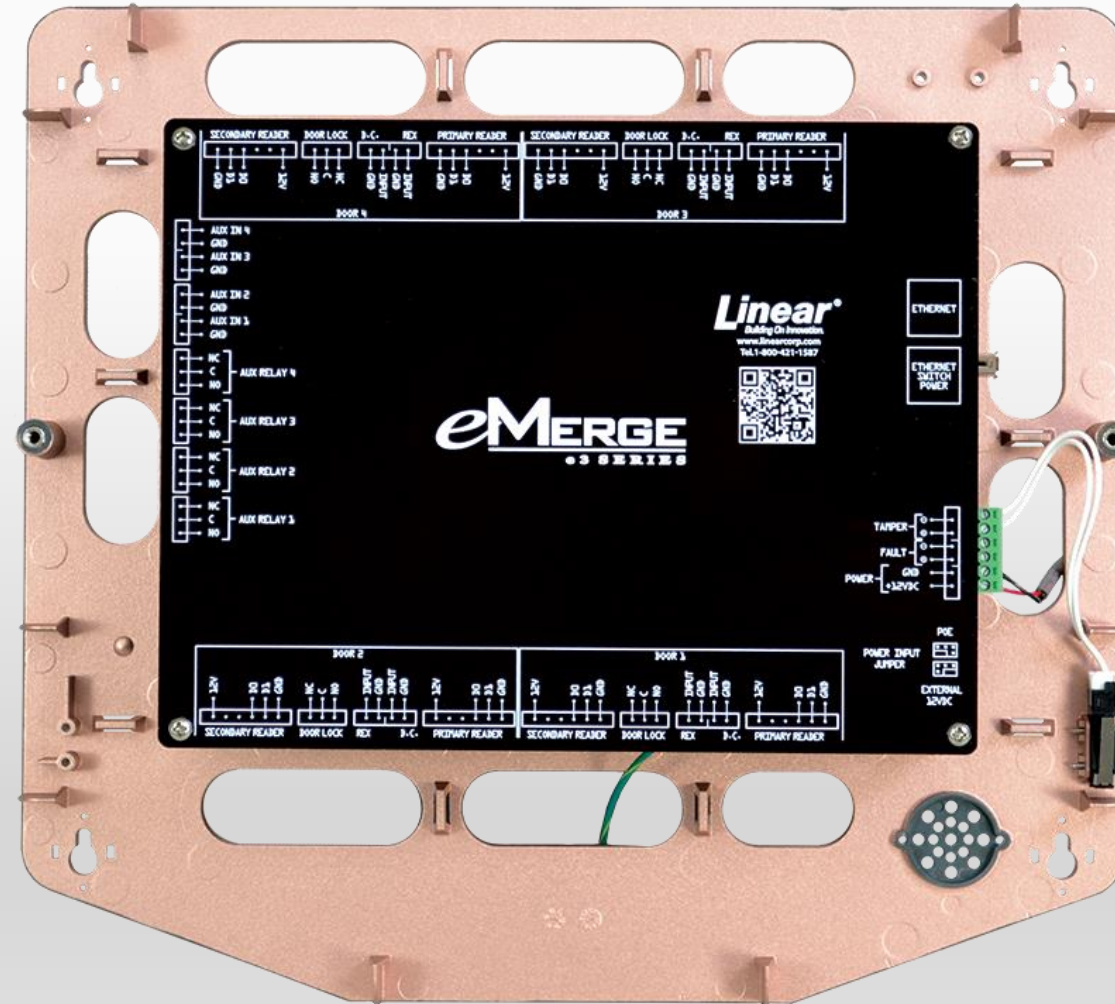
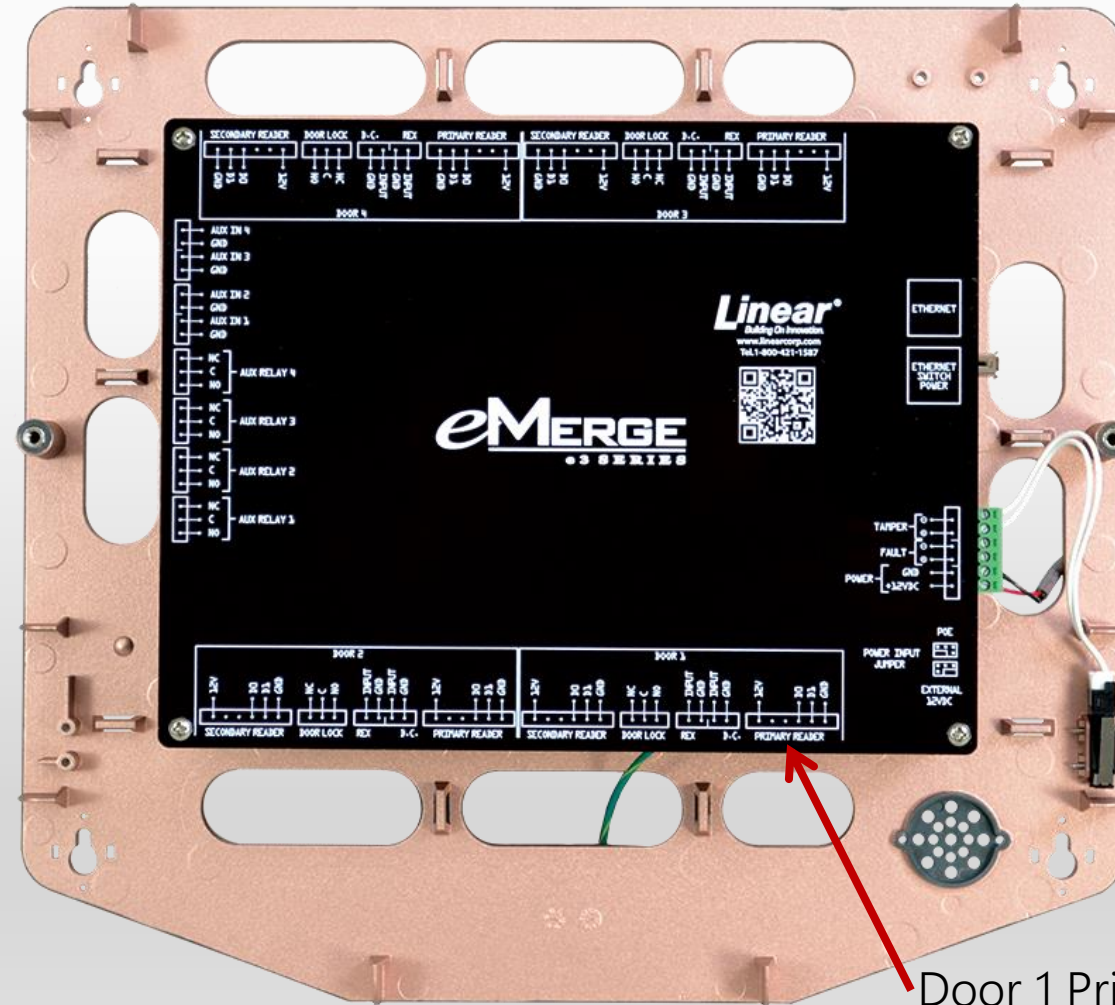


ESSENTIAL HARDWARE OVERVIEW

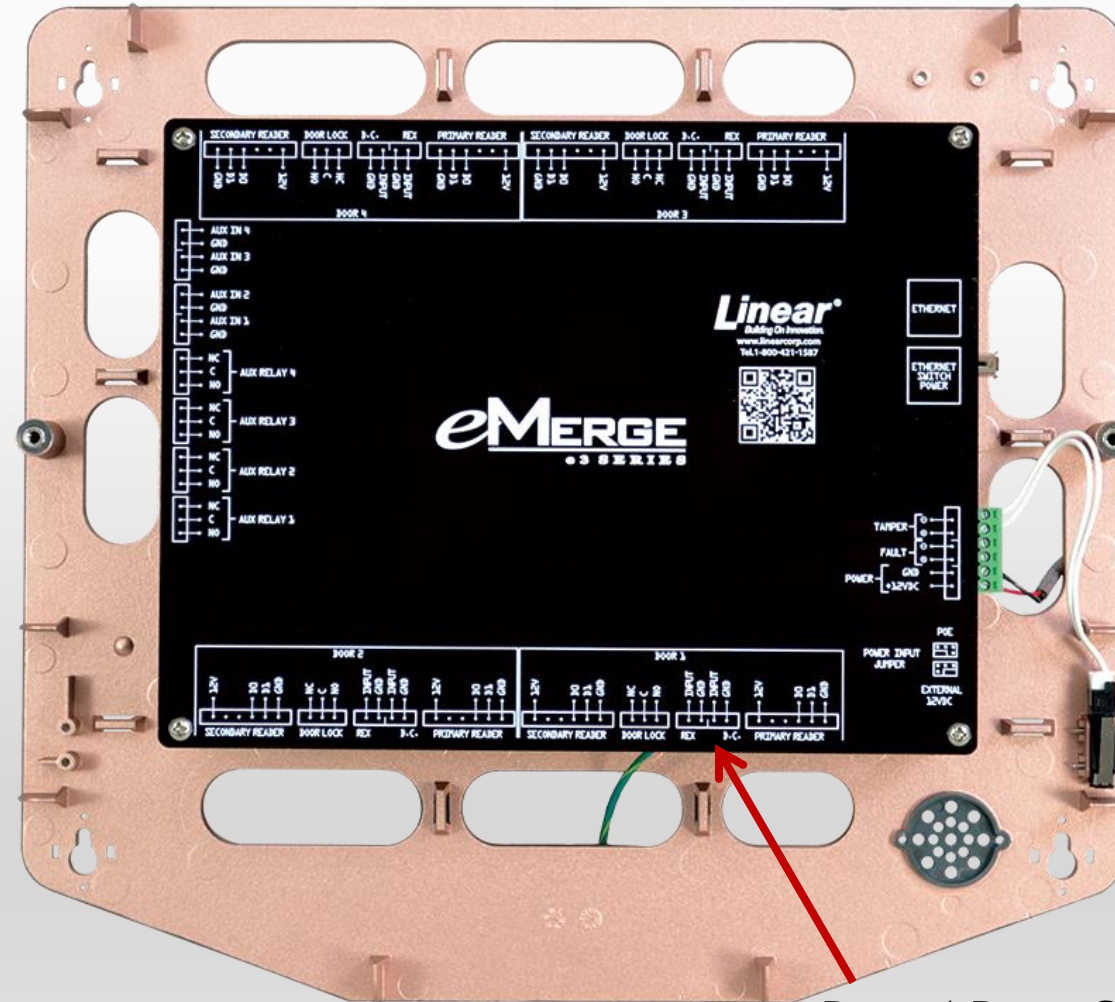


ESSENTIAL HARDWARE OVERVIEW



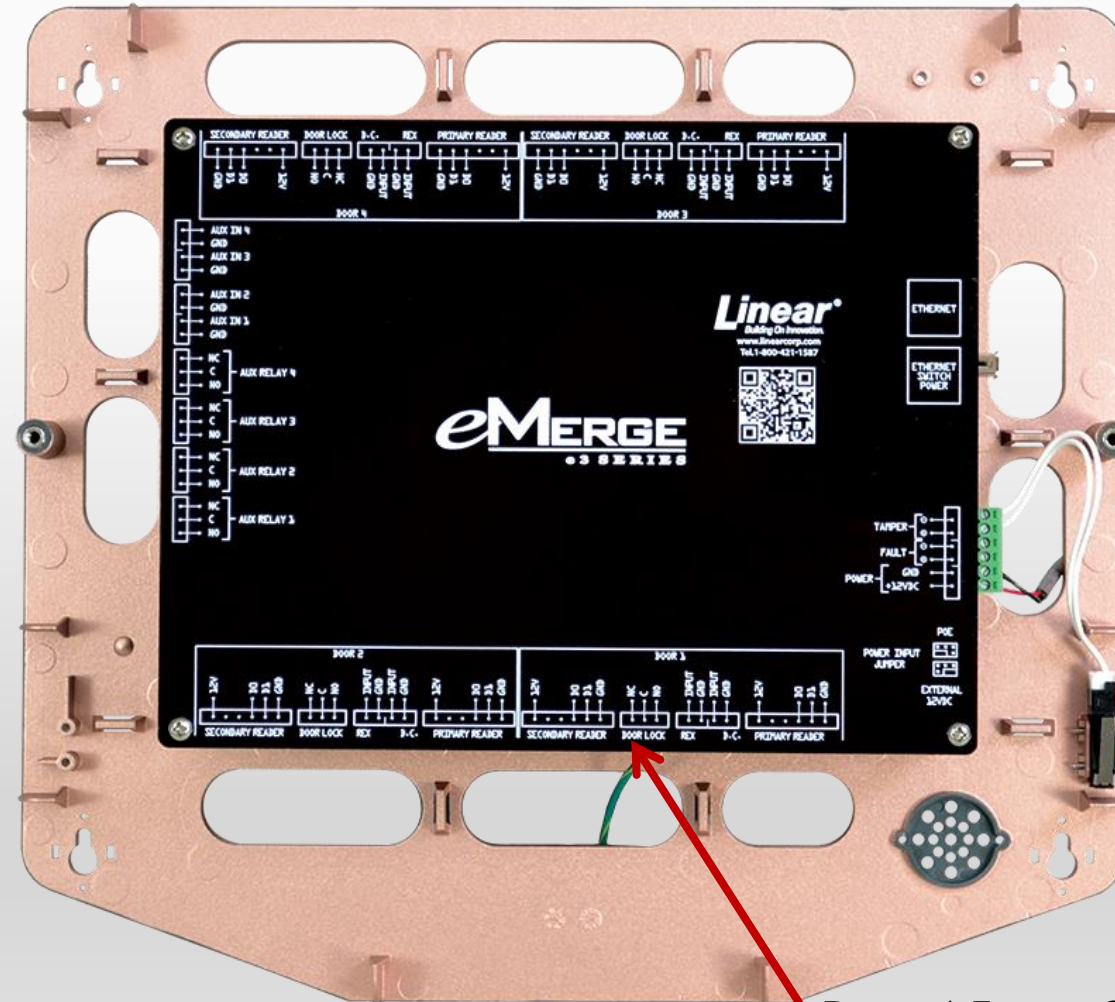
Door 1 Primary Reader
Input

ESSENTIAL HARDWARE OVERVIEW



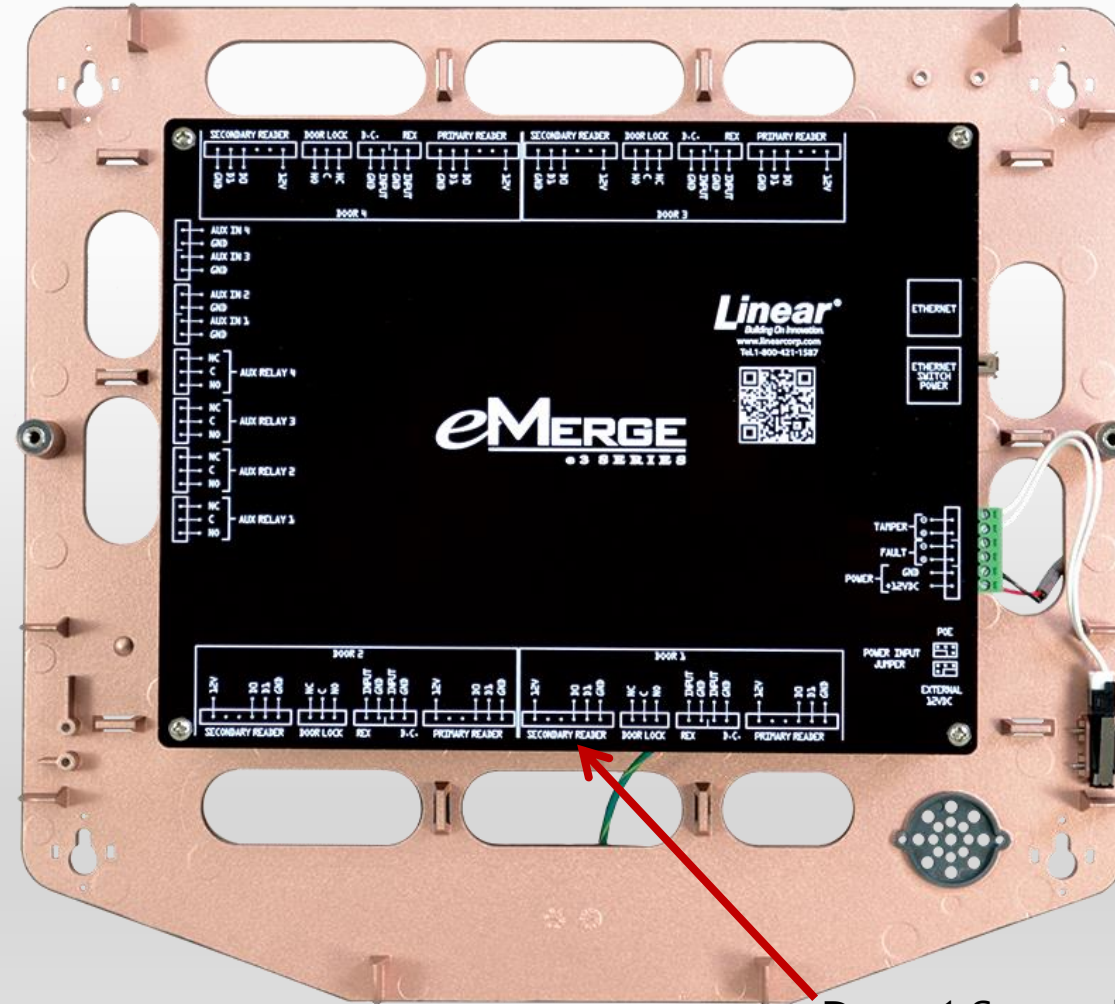
Door 1 Door Contact and
REX Inputs

ESSENTIAL HARDWARE OVERVIEW



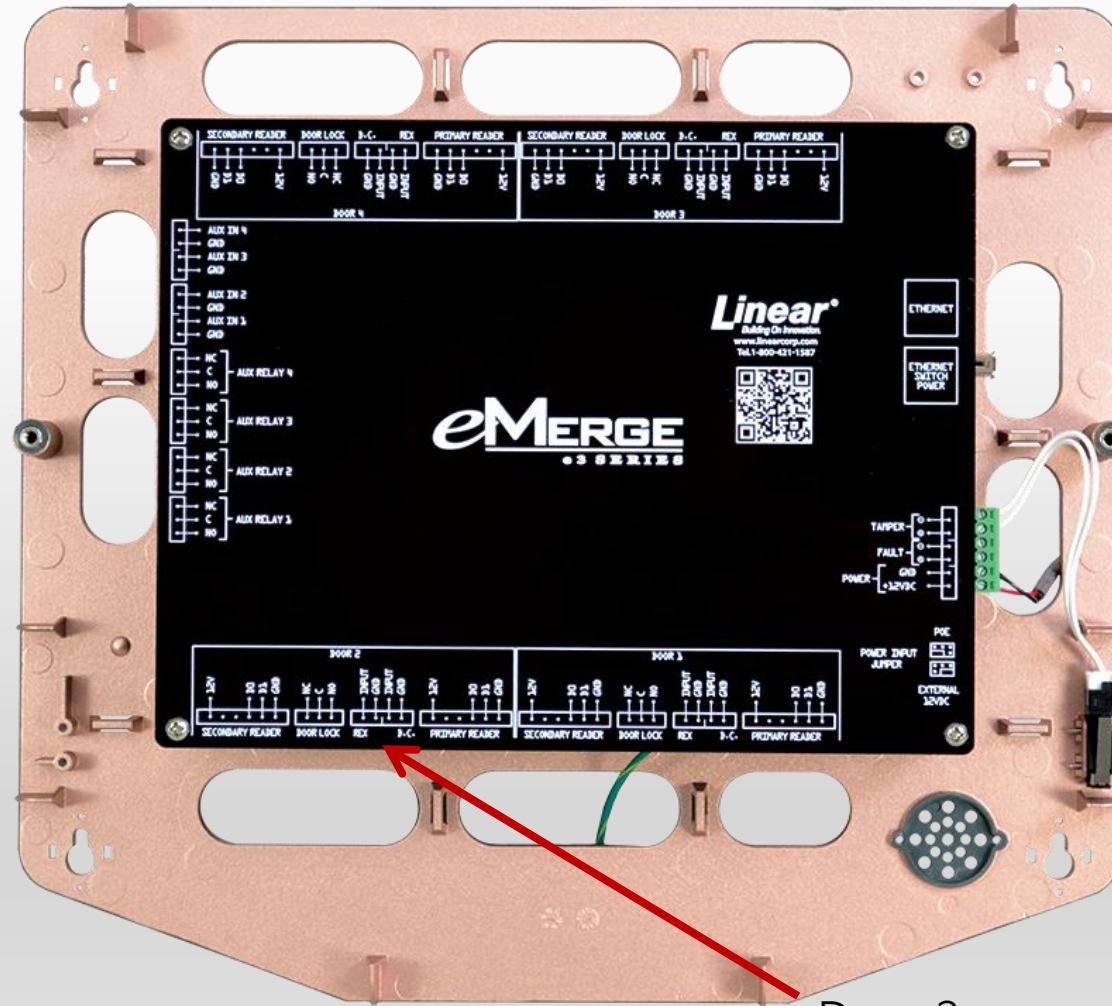
Door 1 Form-C Dry
Contact Lock Relay

ESSENTIAL HARDWARE OVERVIEW



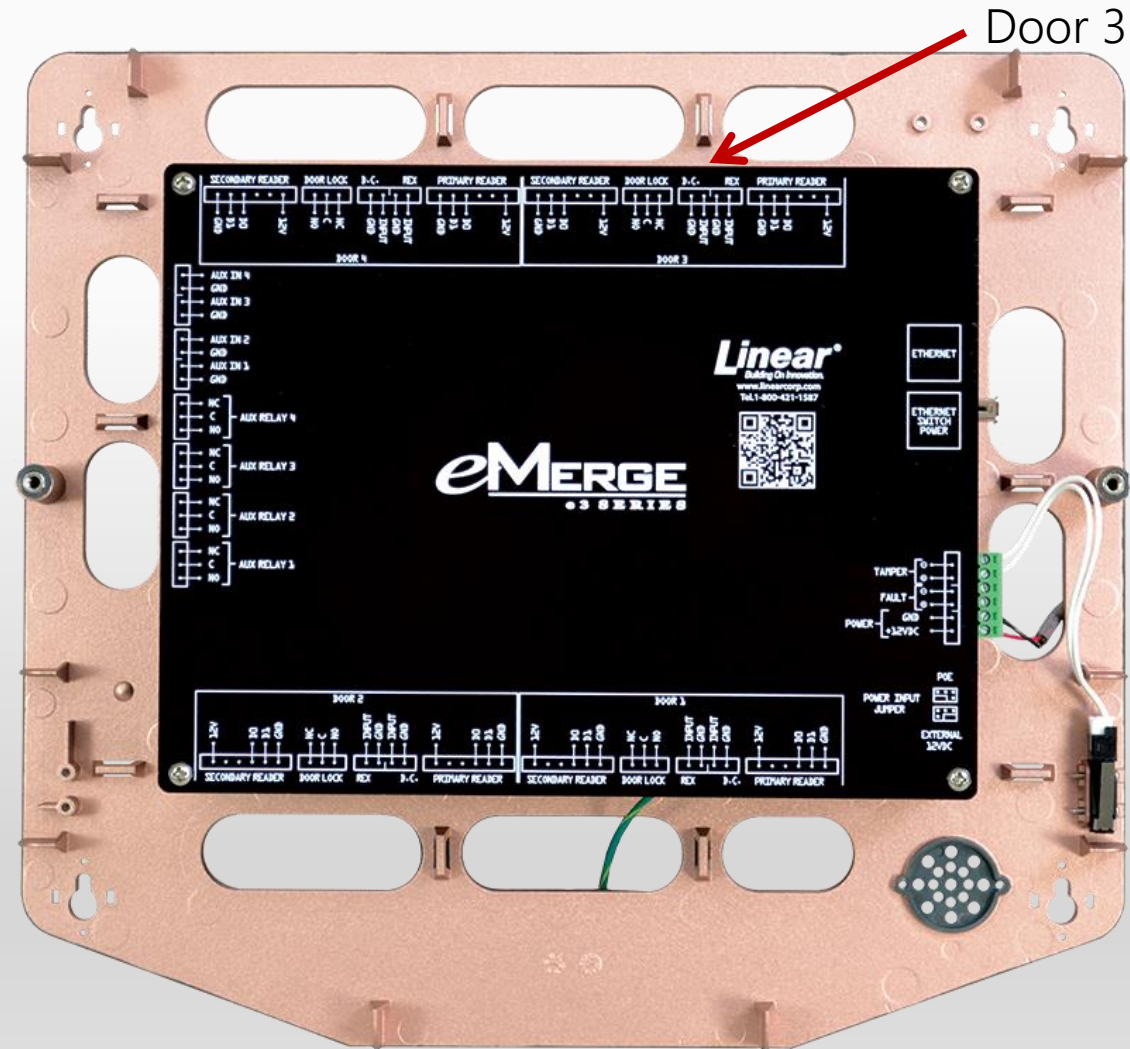
Door 1 Secondary Reader Input

ESSENTIAL HARDWARE OVERVIEW

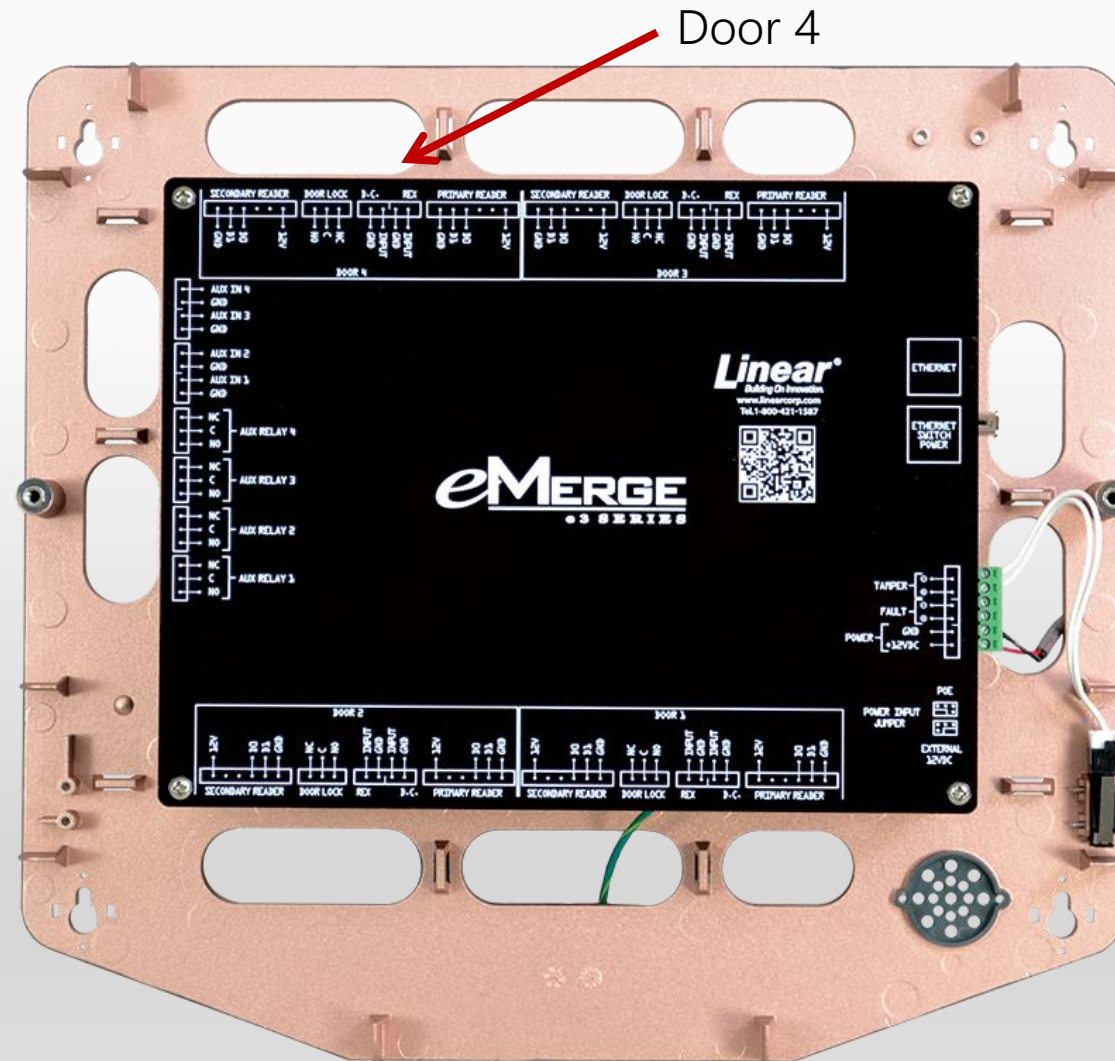


Door 2

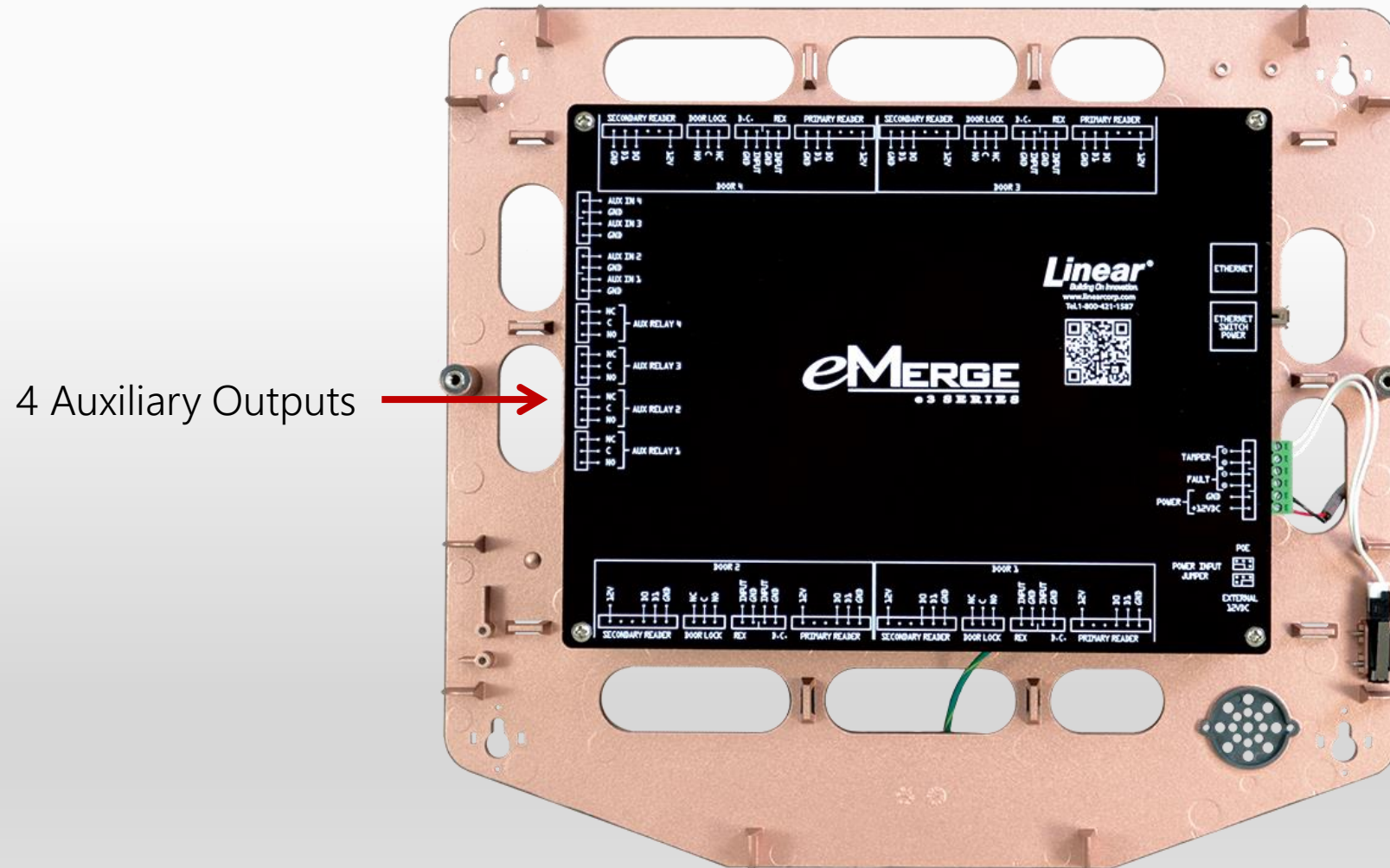
ESSENTIAL HARDWARE OVERVIEW



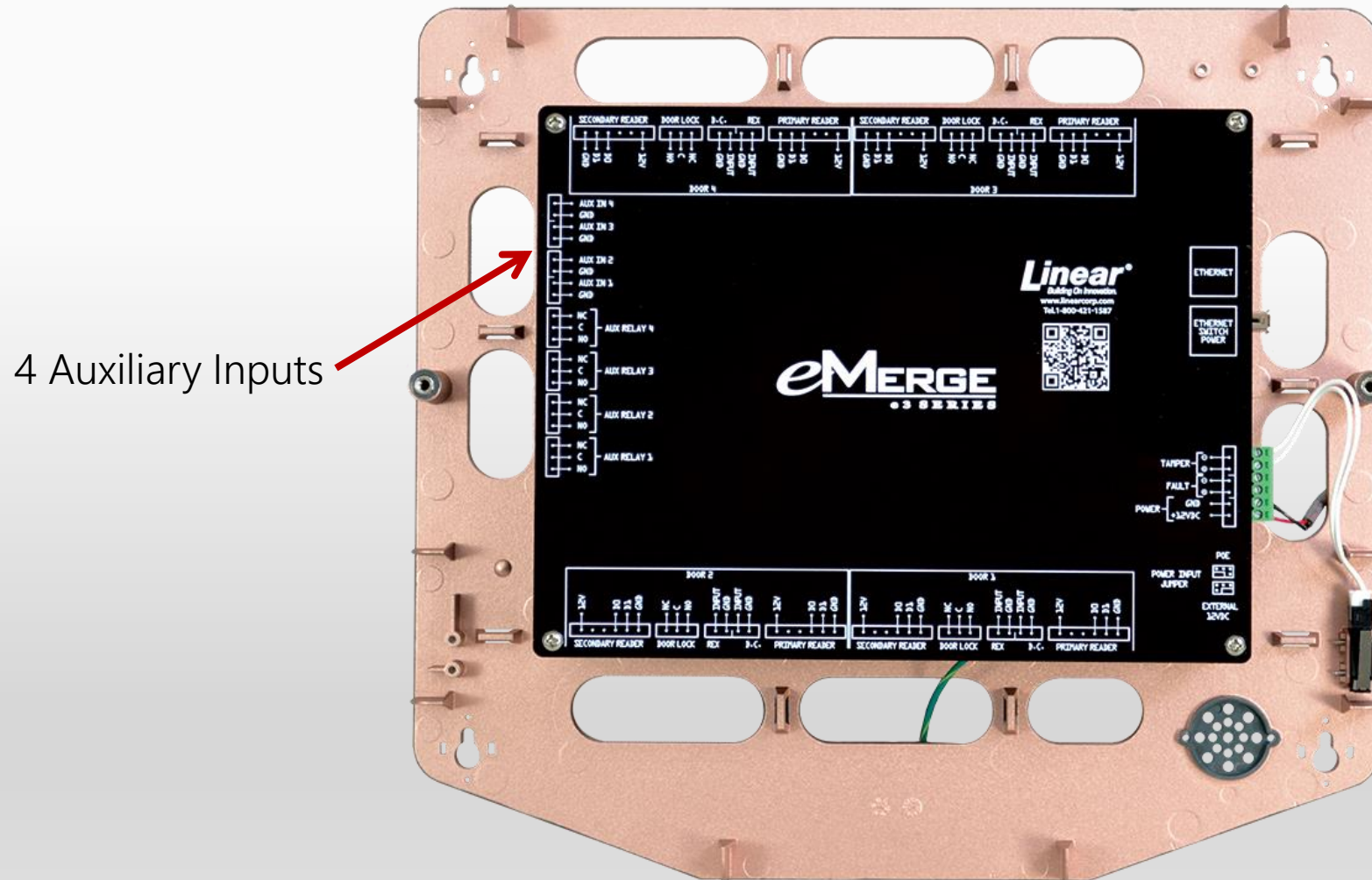
ESSENTIAL HARDWARE OVERVIEW



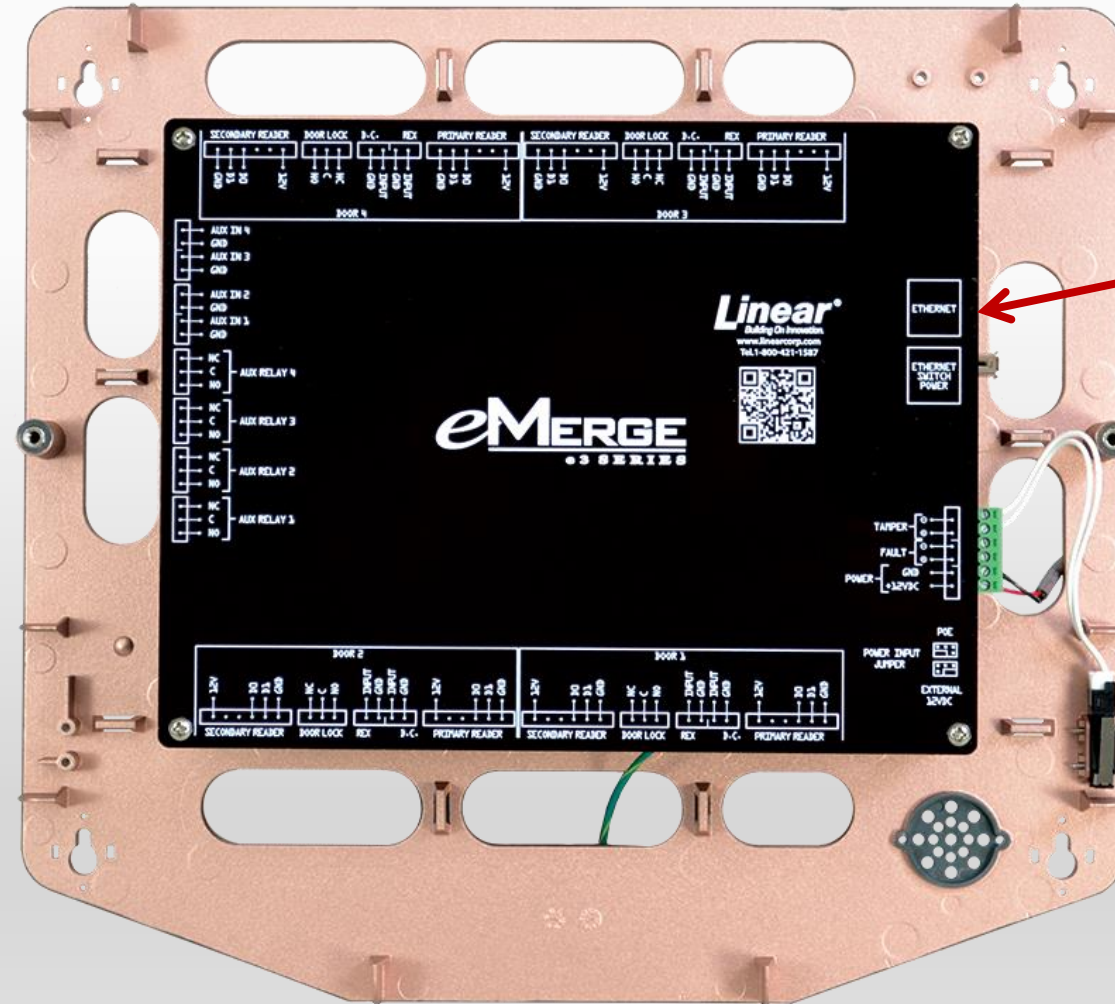
ESSENTIAL HARDWARE OVERVIEW



ESSENTIAL HARDWARE OVERVIEW

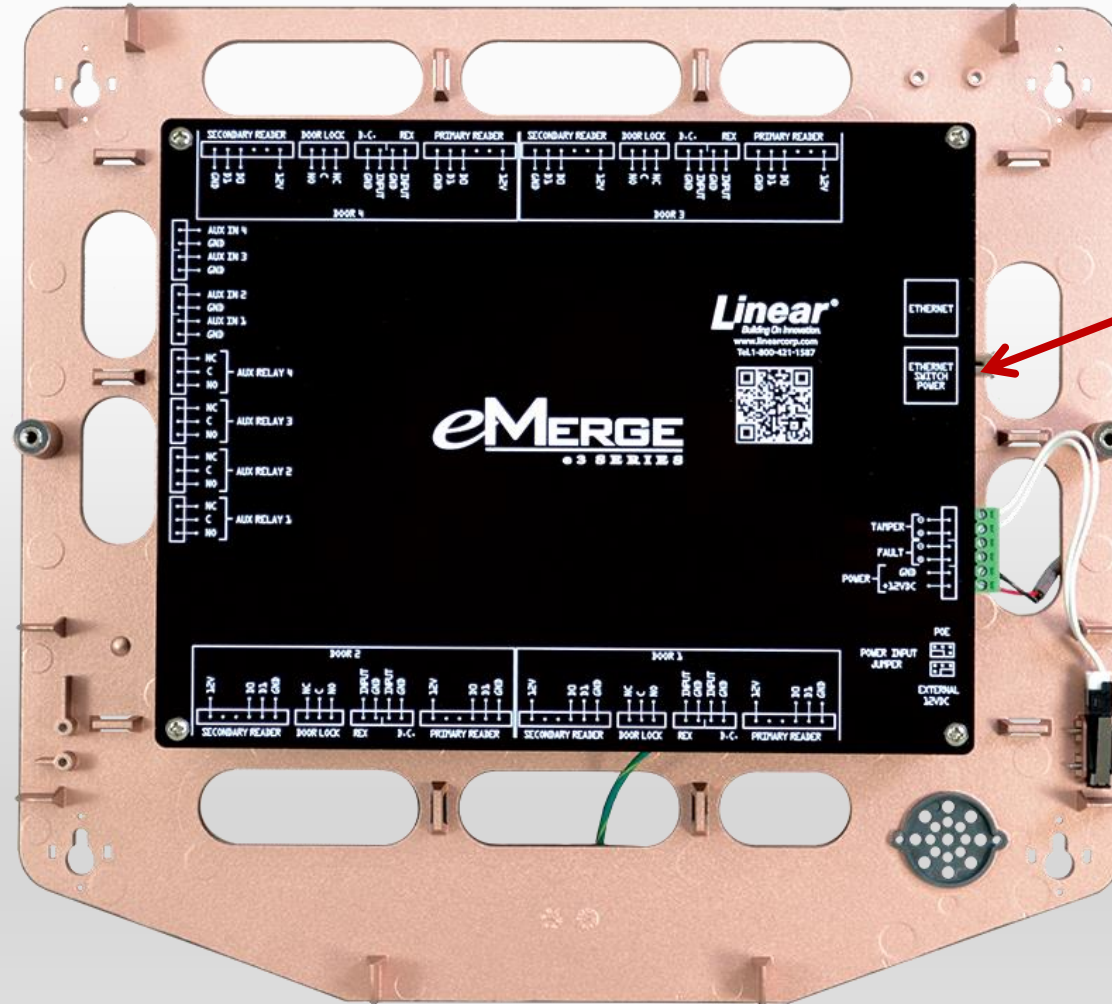


ESSENTIAL HARDWARE OVERVIEW



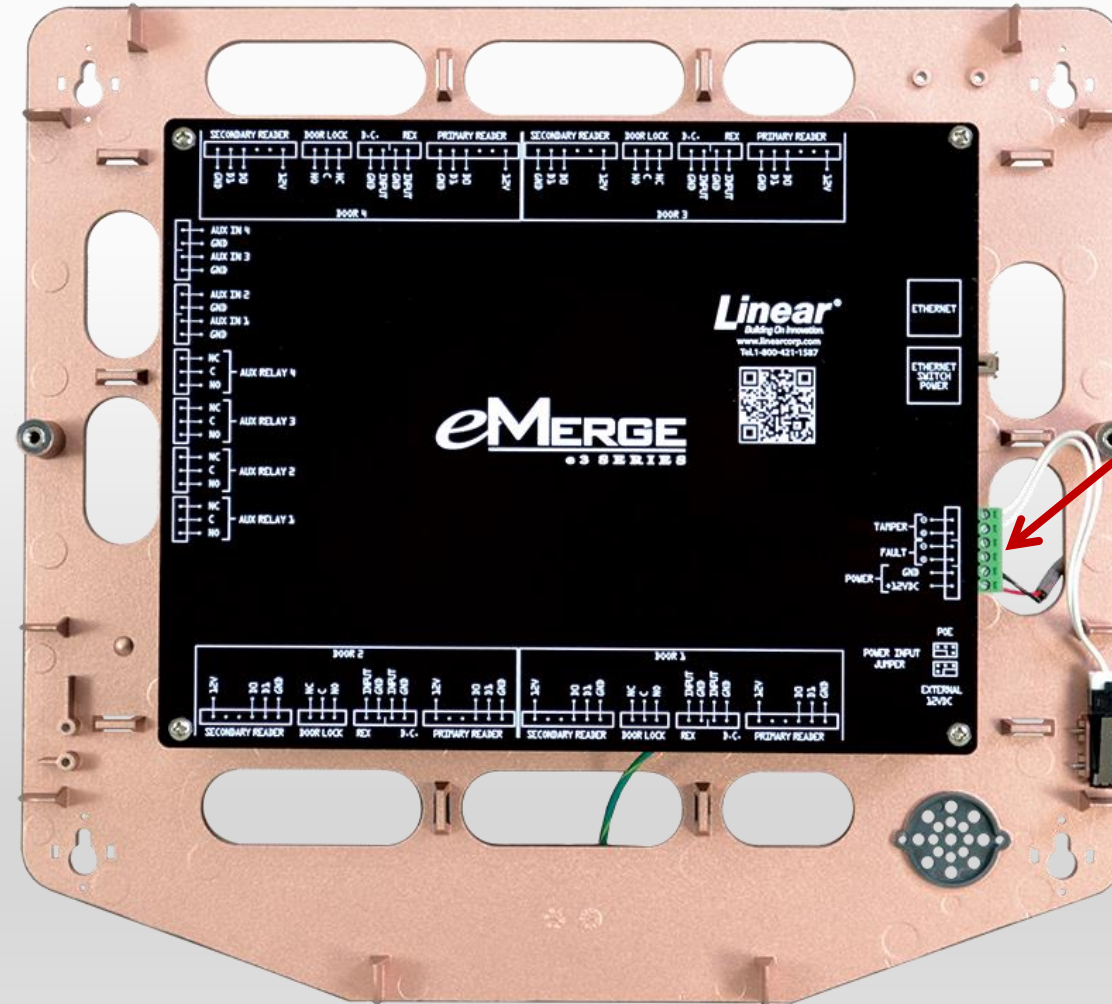
Single Port
Ethernet Switch

ESSENTIAL HARDWARE OVERVIEW



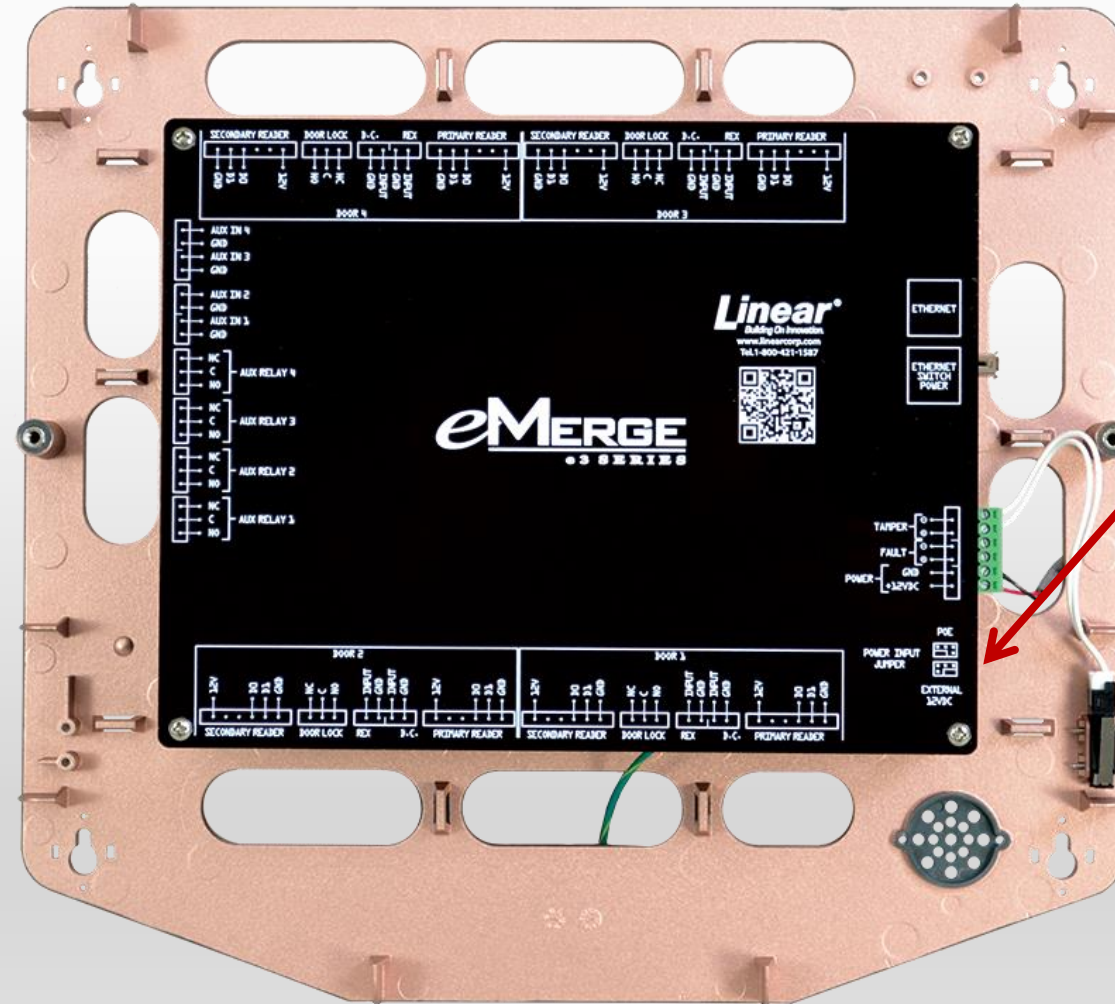
Ethernet Power
Switch Port

ESSENTIAL HARDWARE OVERVIEW



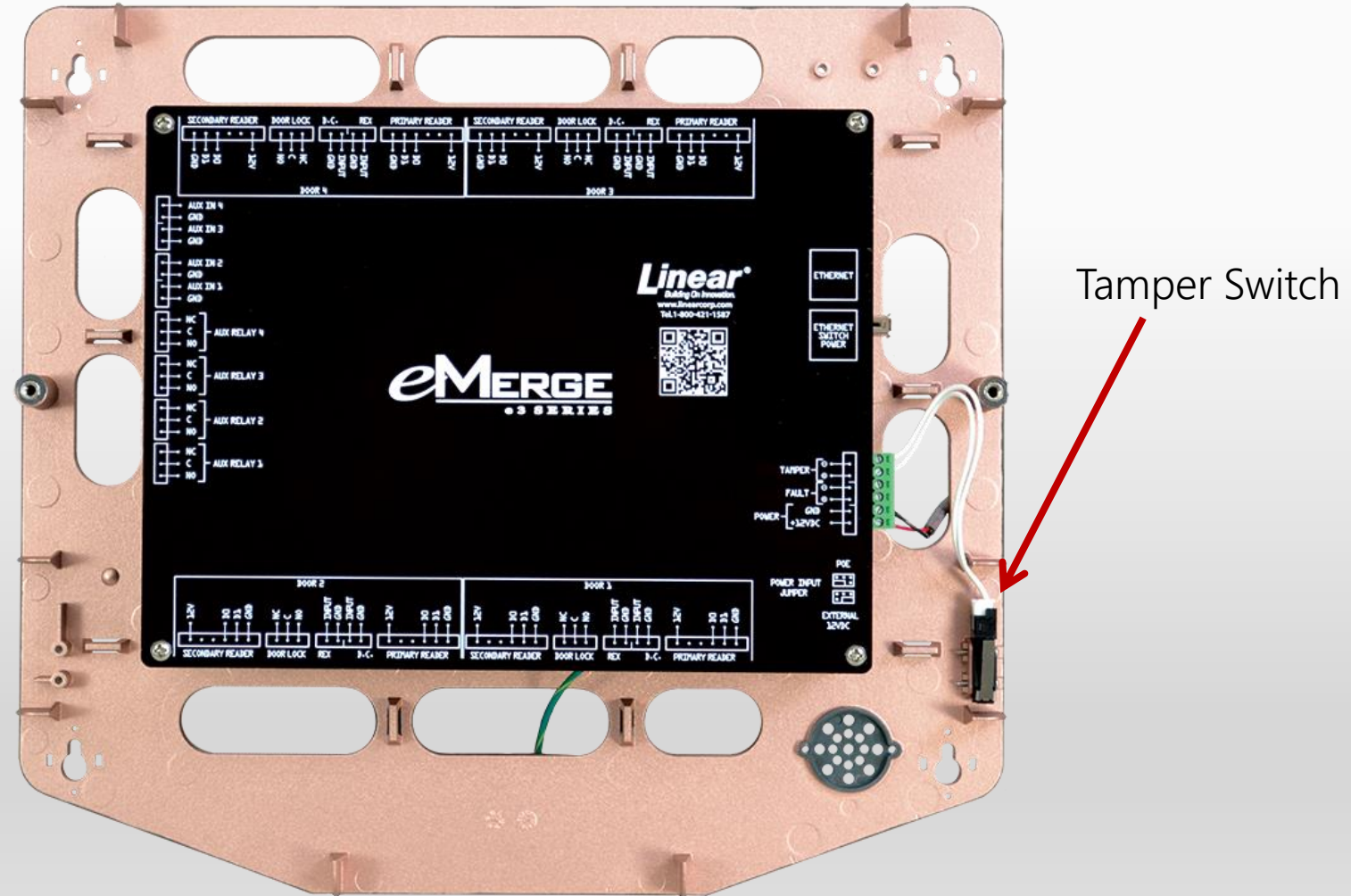
Tamper, Fault and
12VDC Power inputs

ESSENTIAL HARDWARE OVERVIEW



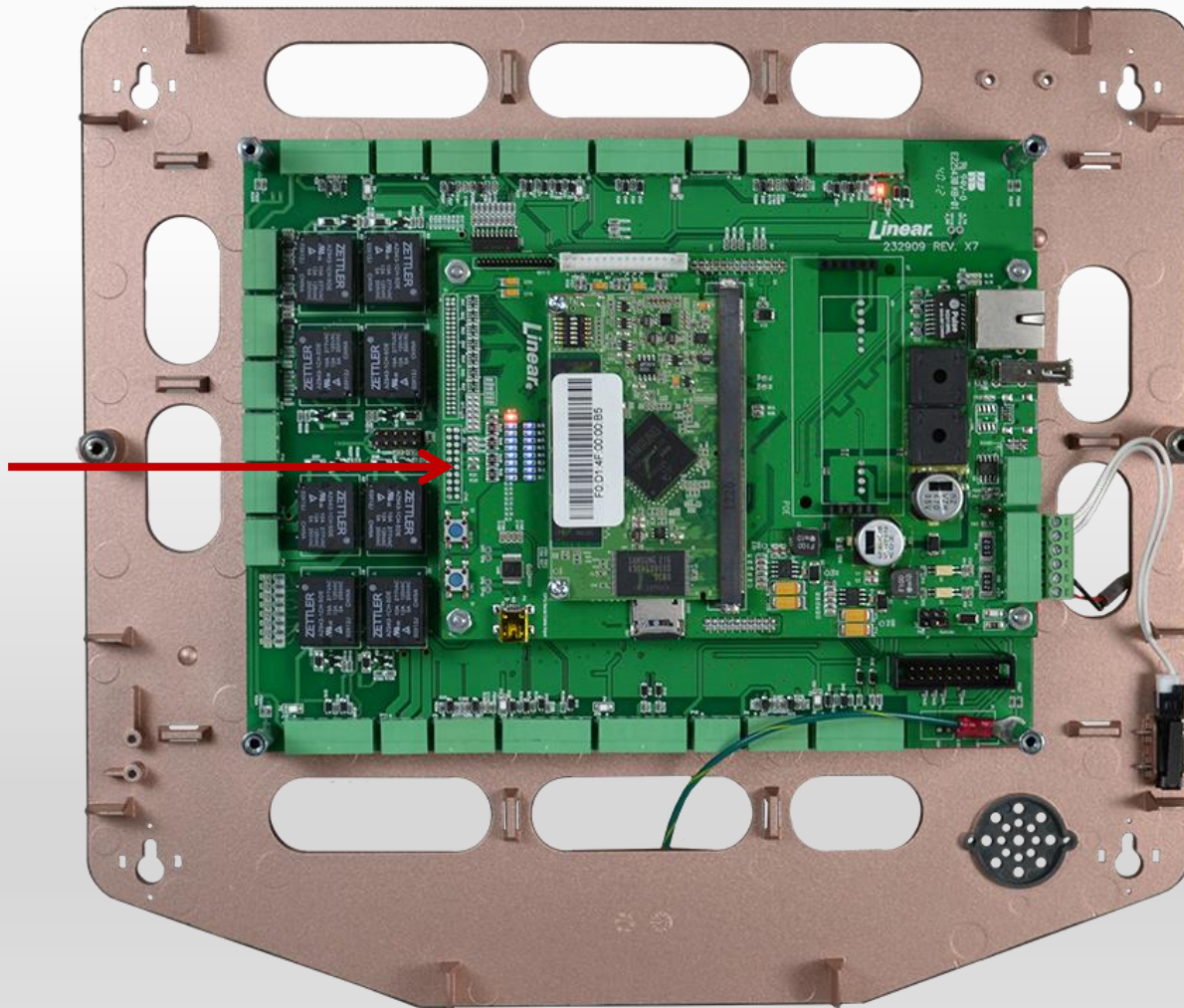
Jumper for Power
12VDC or POE

ESSENTIAL HARDWARE OVERVIEW



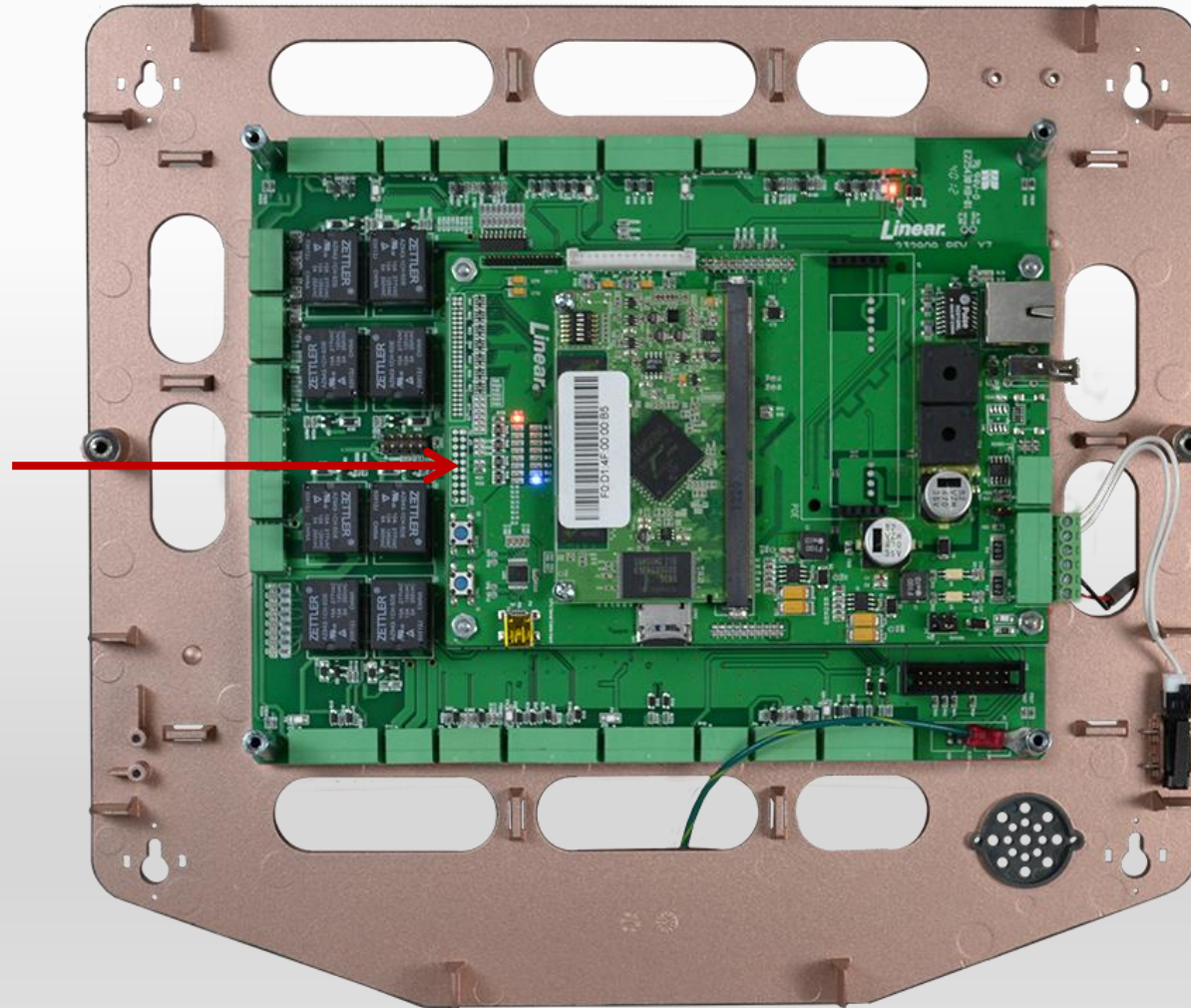
ESSENTIAL WITHOUT SILKSCREEN

Essential's Browser
LED'S during initial
start-up



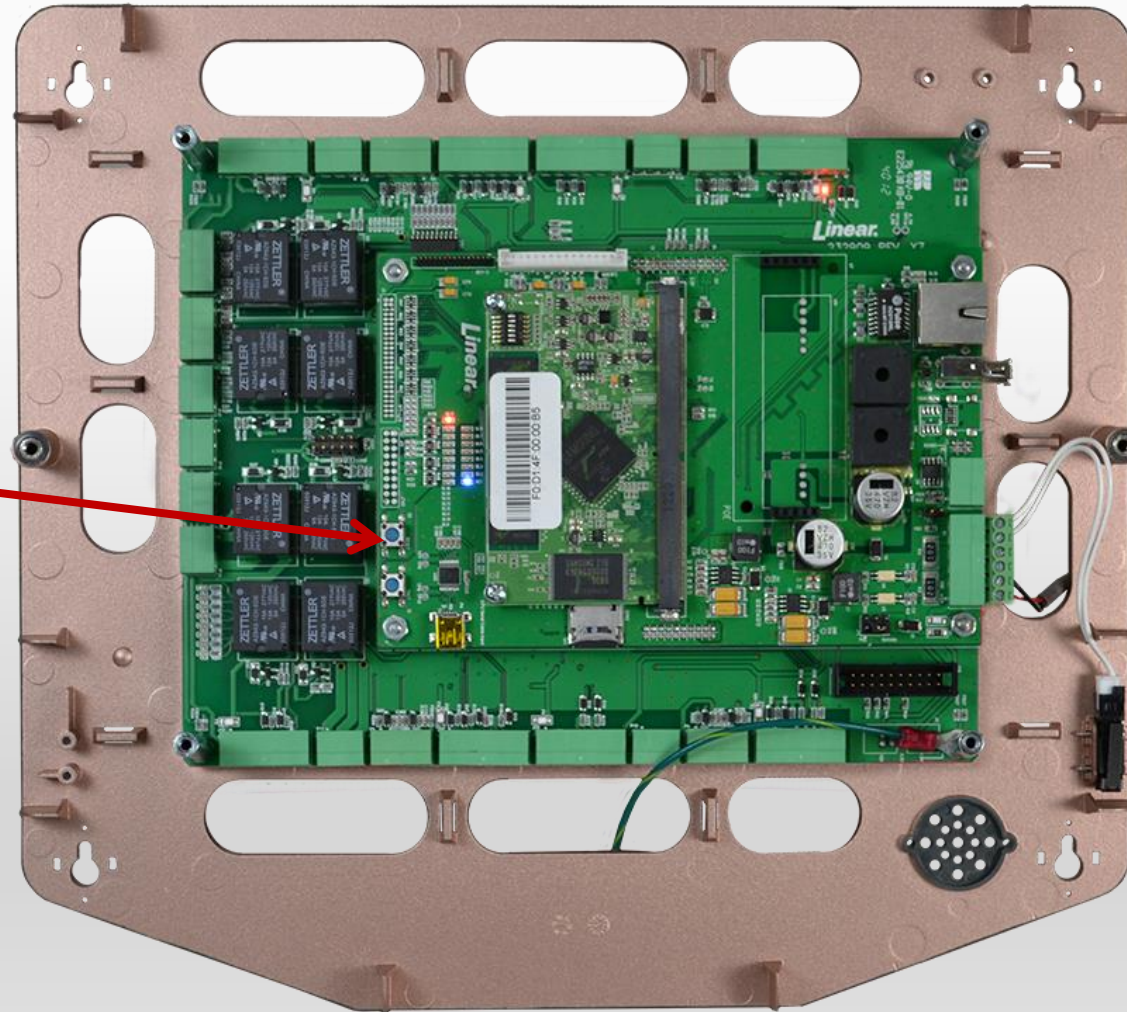
ESSENTIAL WITHOUT SILKSCREEN

Essential's Browser
LED'S with
Browser running



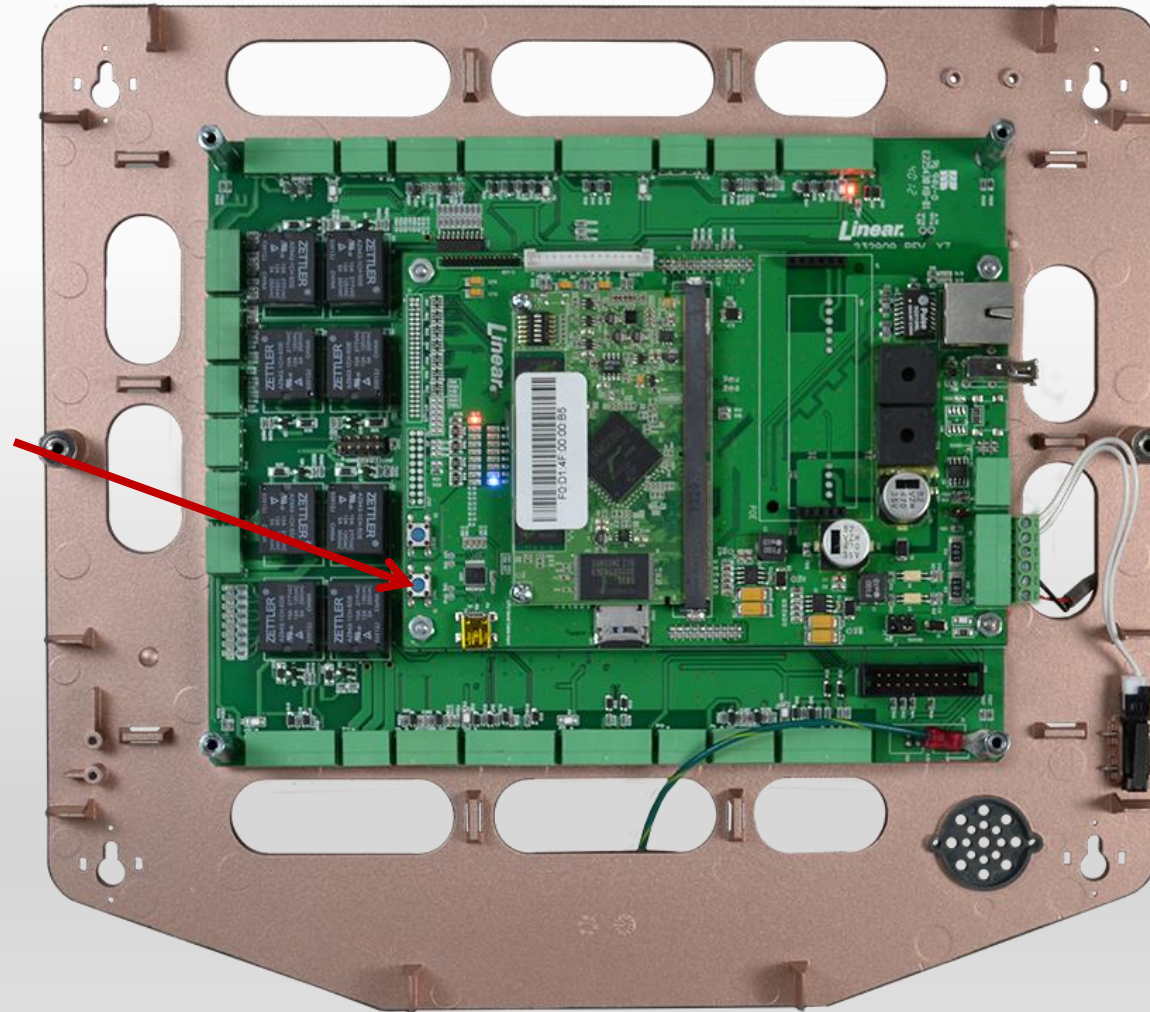
ESSENTIAL WITHOUT SILKSCREEN

S2 Reset Button



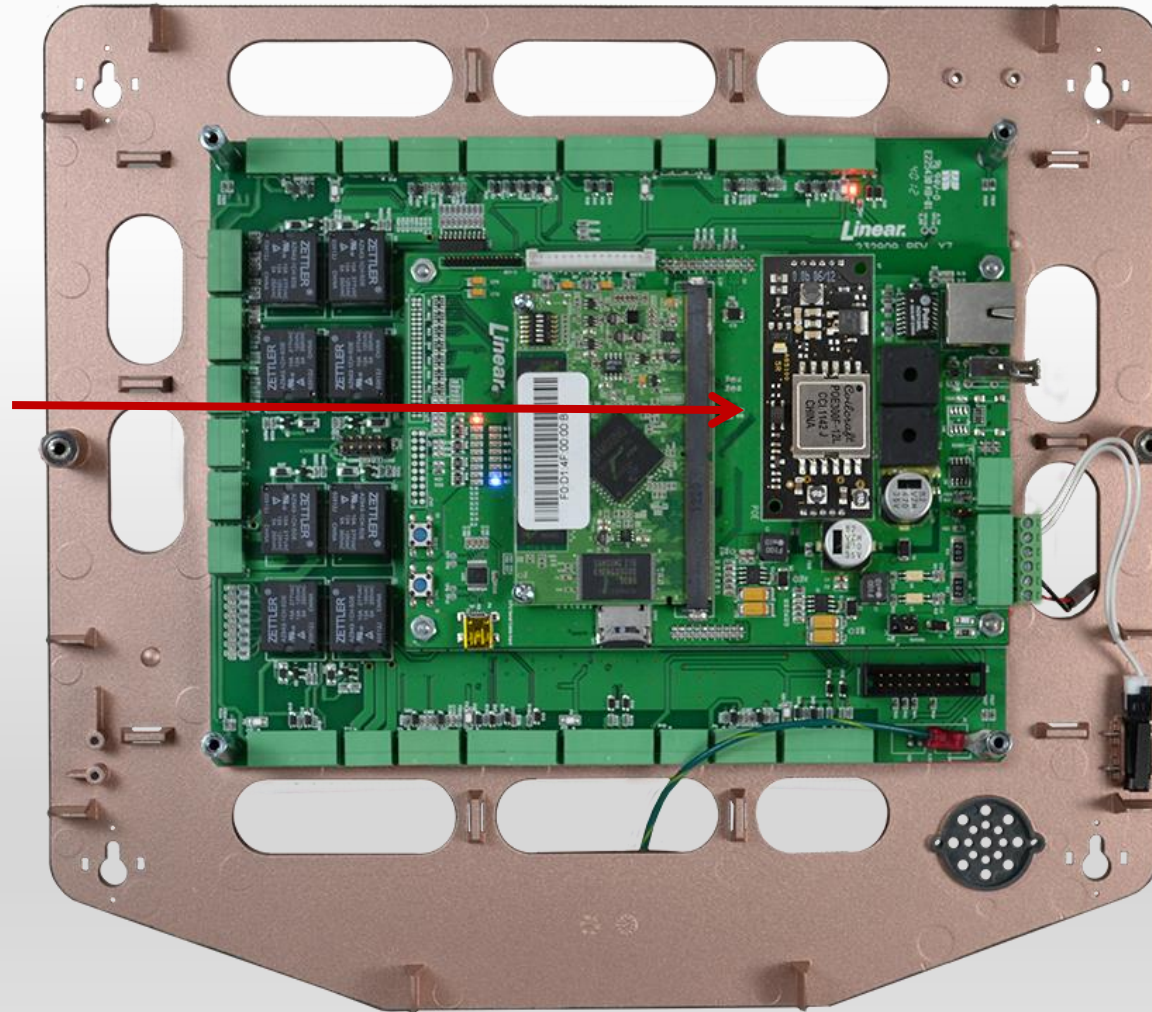
ESSENTIAL WITHOUT SILKSCREEN

S1 Factory
Default Button
Note: Press and hold for 20
seconds to Factory Default
Essential



ESSENTIAL WITHOUT SILKSCREEN

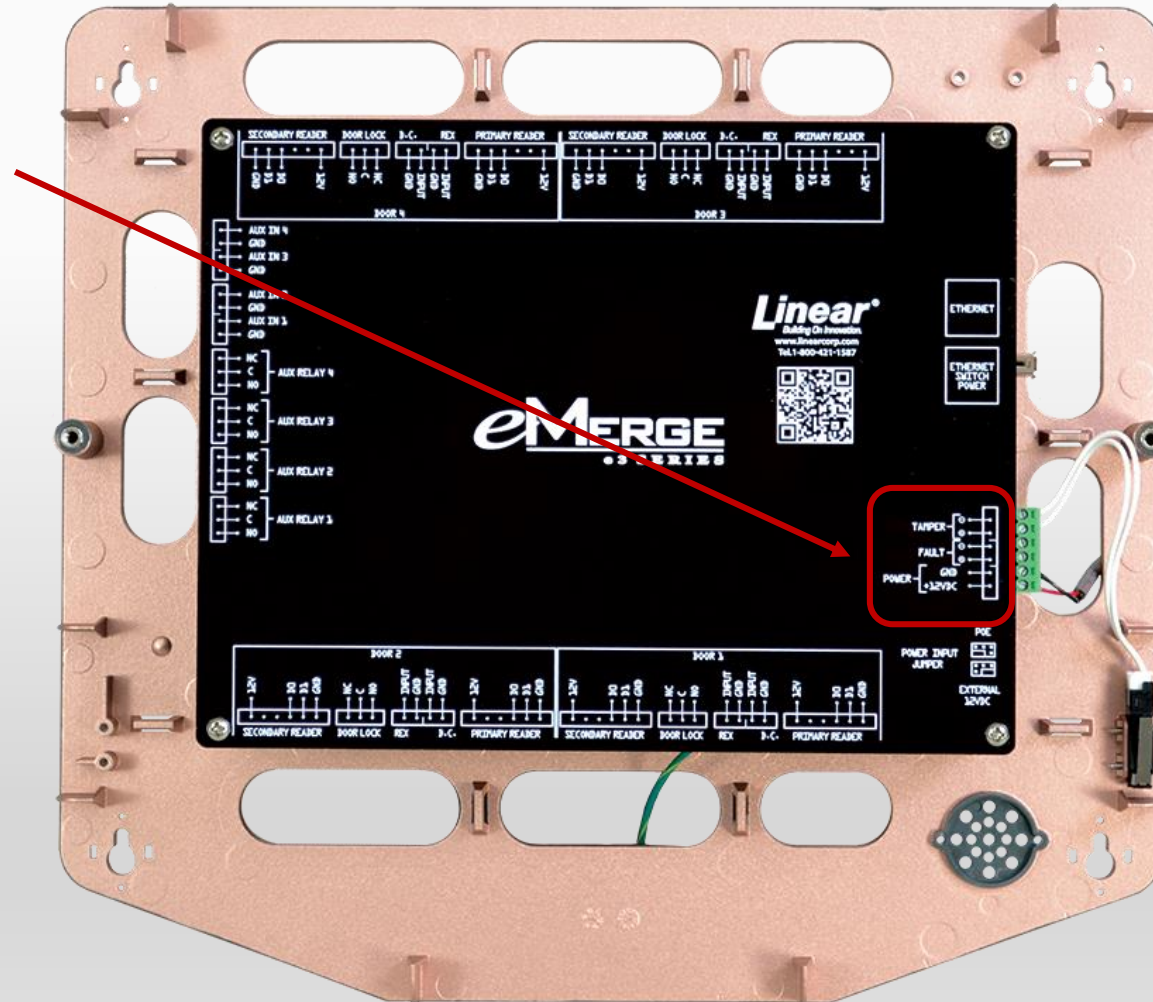
Essential with optional POE
(Power Over Ethernet)
module installed



CONNECTION – COMMUNICATION CABLE

CONNECTING PATCH CABLE TO COMPUTER

1. Power the eMerge Access Control System using a 12 VDC/2amp power supply.



CONNECTION – COMMUNICATION CABLE

CONNECTING PATCH CABLE TO COMPUTER

1. Power the eMerge Access Control System using a 12 VDC/2amp power supply.
2. Plug one end of the patch cable into the Ethernet port of the eMerge panel and connect the other end into the Network.

